

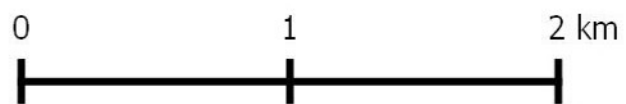
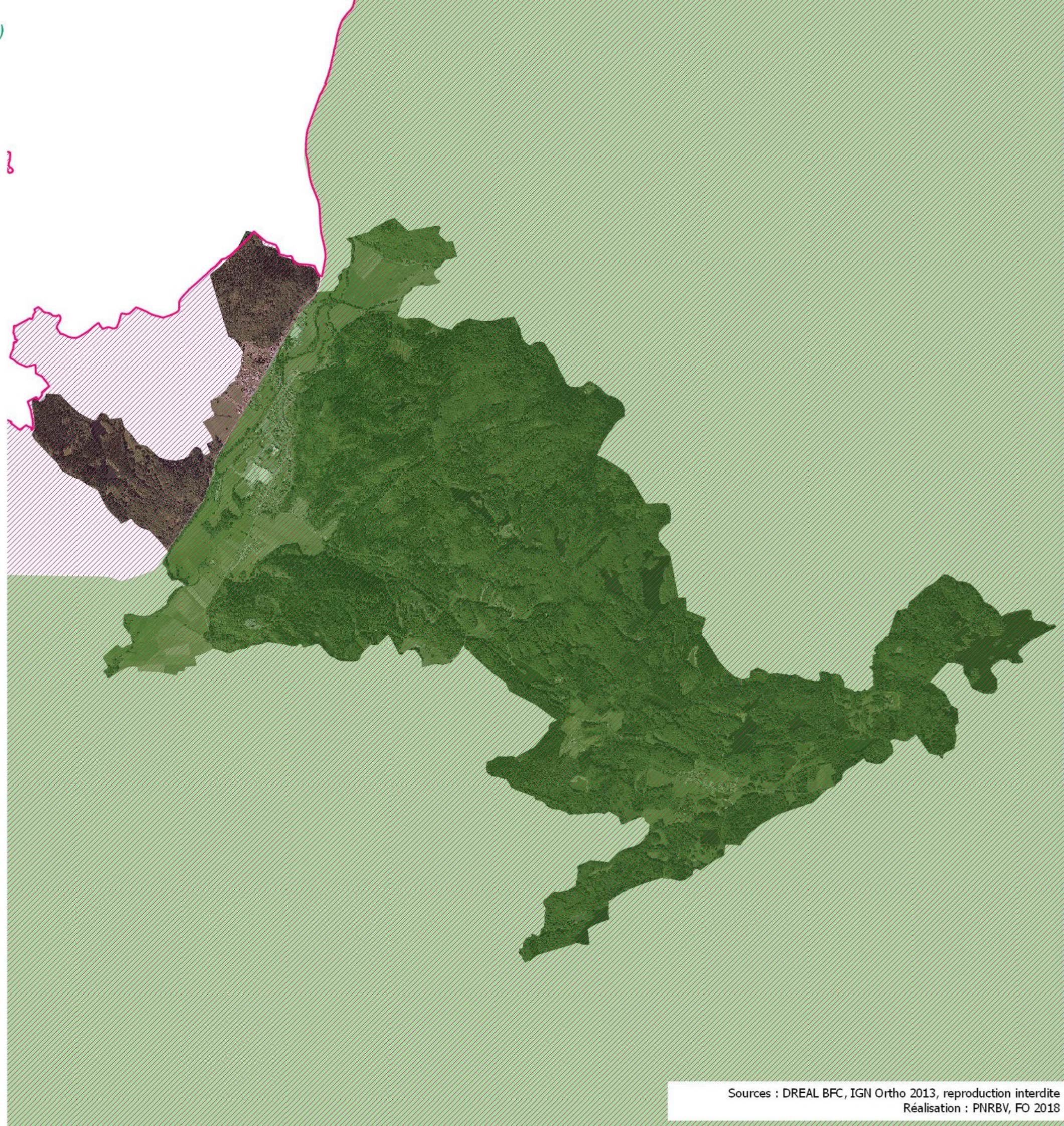




## Ajustement du périmètre du site Natura 2000

Commune de Faucogney-et-La-Mer  
(Commune entièrement concernée par le site Natura 2000)

-  Périmètre ajusté du site Natura 2000 (ZSC et ZPS)
-  Ancien périmètre Natura 2000





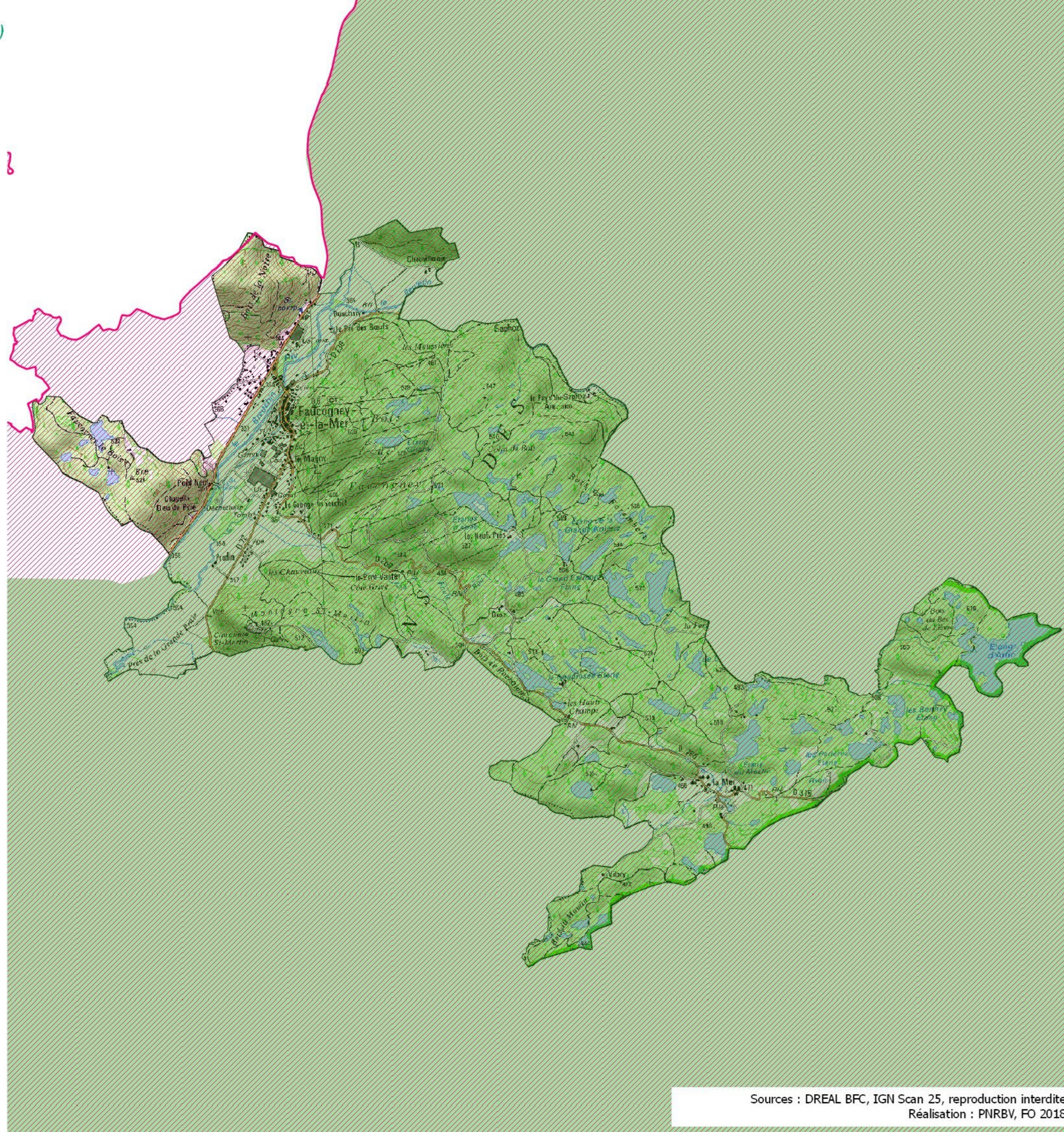




## Ajustement du périmètre du site Natura 2000

Commune de Faucogney-et-La-Mer  
(Commune entièrement concernée par le site Natura 2000)

-  Périmètre ajusté du site Natura 2000 (ZSC et ZPS)
-  Ancien périmètre Natura 2000














## Limites administratives

Commune de Faucogney-et-La-Mer

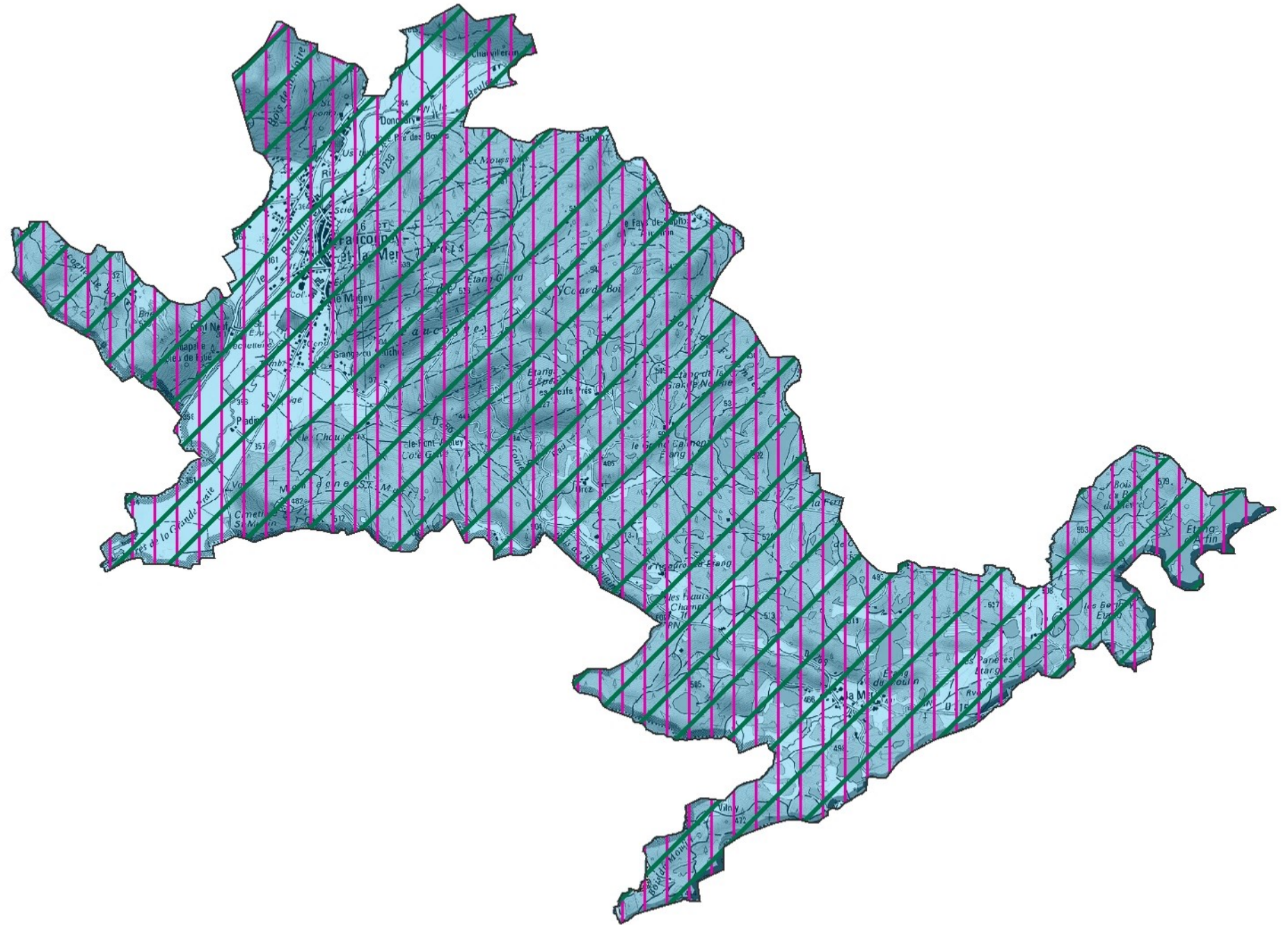
-  Limites communales
-  Parc naturel régional des Ballons des Vosges
-  Site Natura 2000

## Limites intercommunales

-  Communauté de Communes des Mille Etangs
-  Communauté de Communes du Pays de Lure
-  Communauté de Communes du Triangle Vert
-  Communauté de communes du Pays de Luxeuil



0 1 2 Km



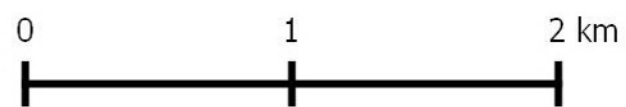
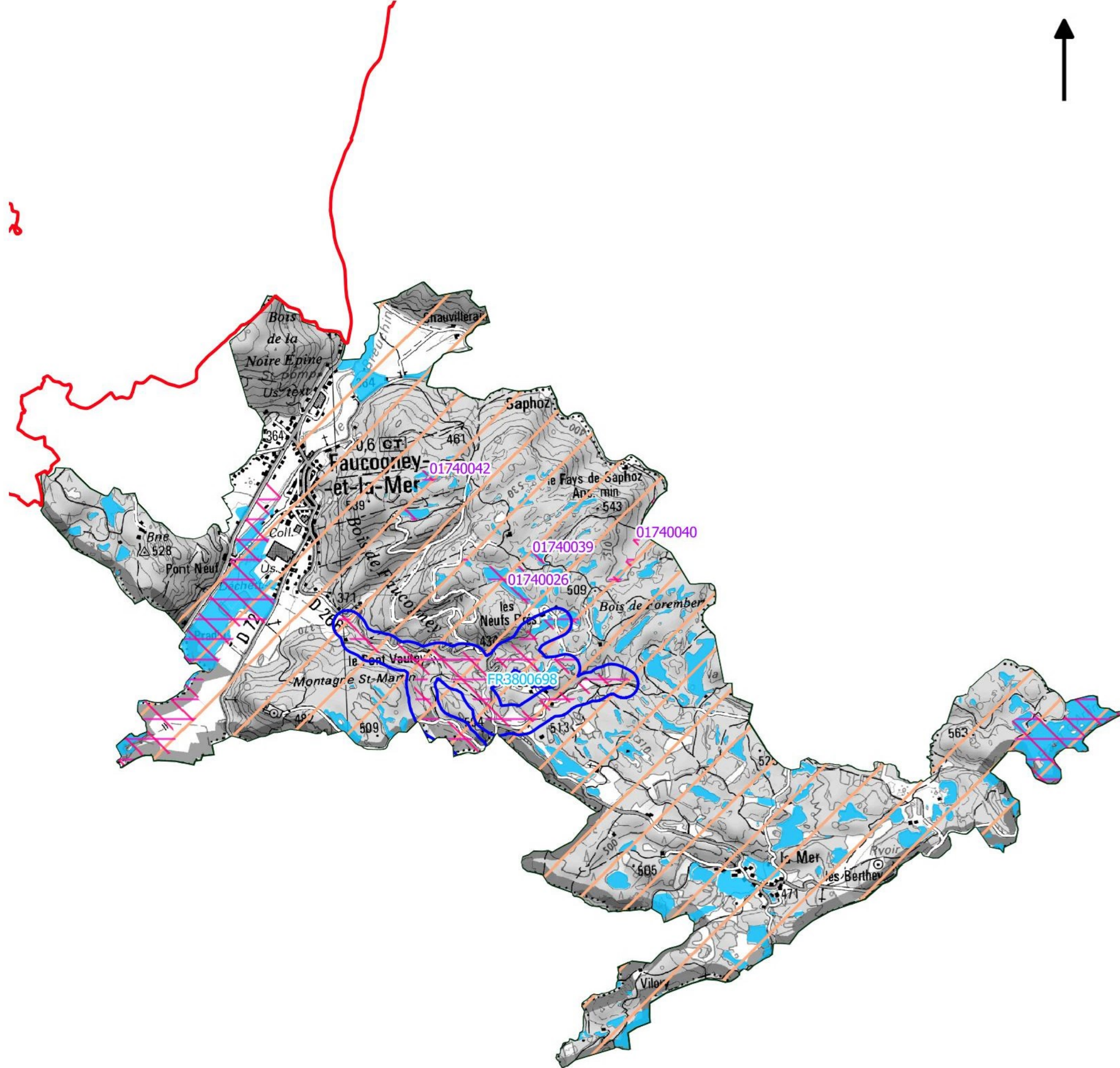


Site natura 2000 "Plateau des mille étangs" (ZSC FR4301346 et ZPS FR4312208)



Zonages environnementaux


Commune de Faucogney-et-La-Mer








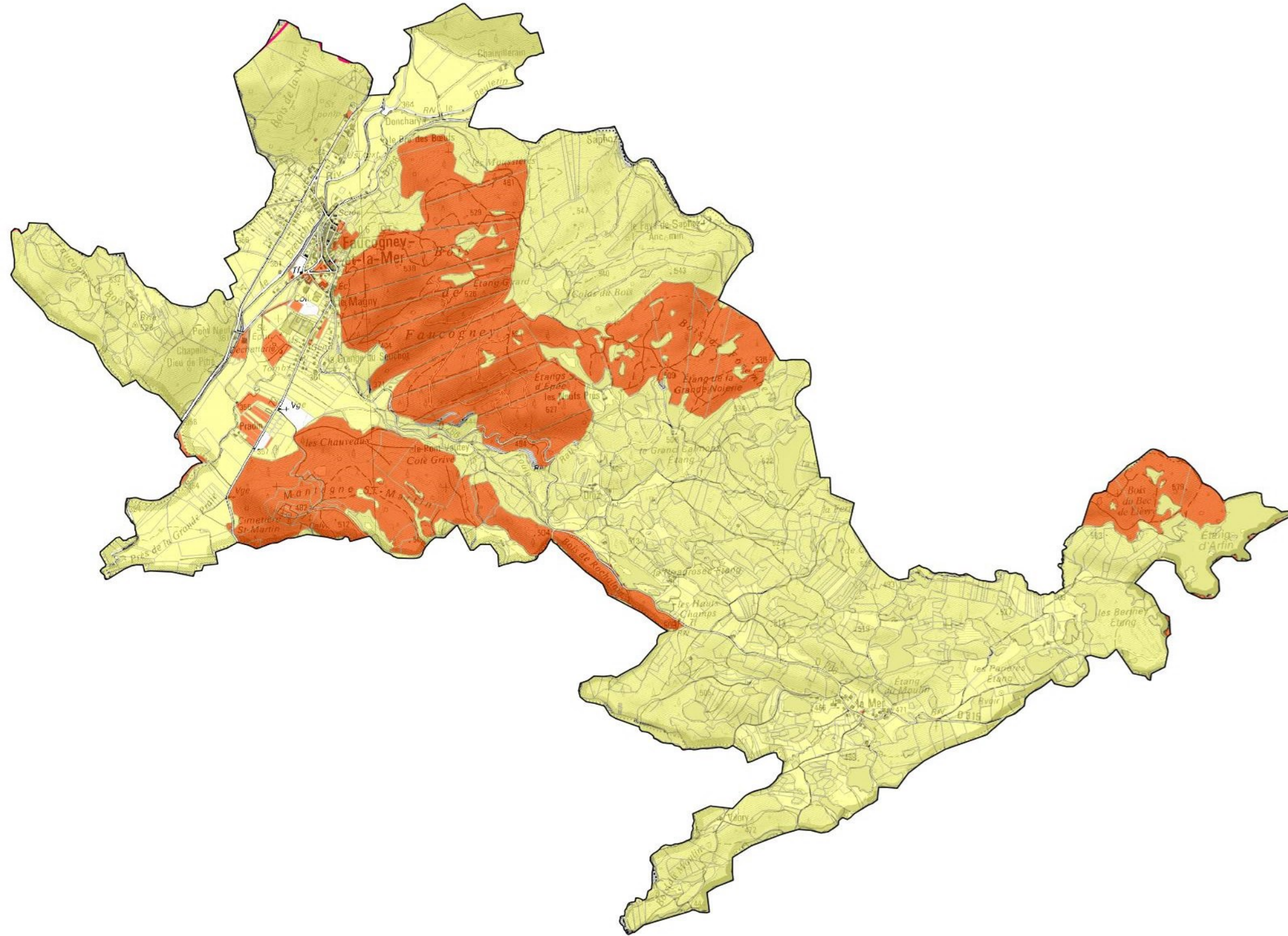
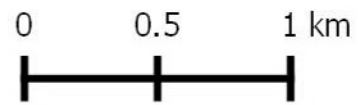


## Répartition foncière Faucogney-et-La-Mer

 Périmètre du site Natura 2000

Type de propriété

-  privée
-  communale et EPCI
-  domaine de l'Etat







## Bassin hydrographique et Réseau hydrologique

Commune de Faucogney-et-La-Mer

— Cours d'eau

■ Etangs

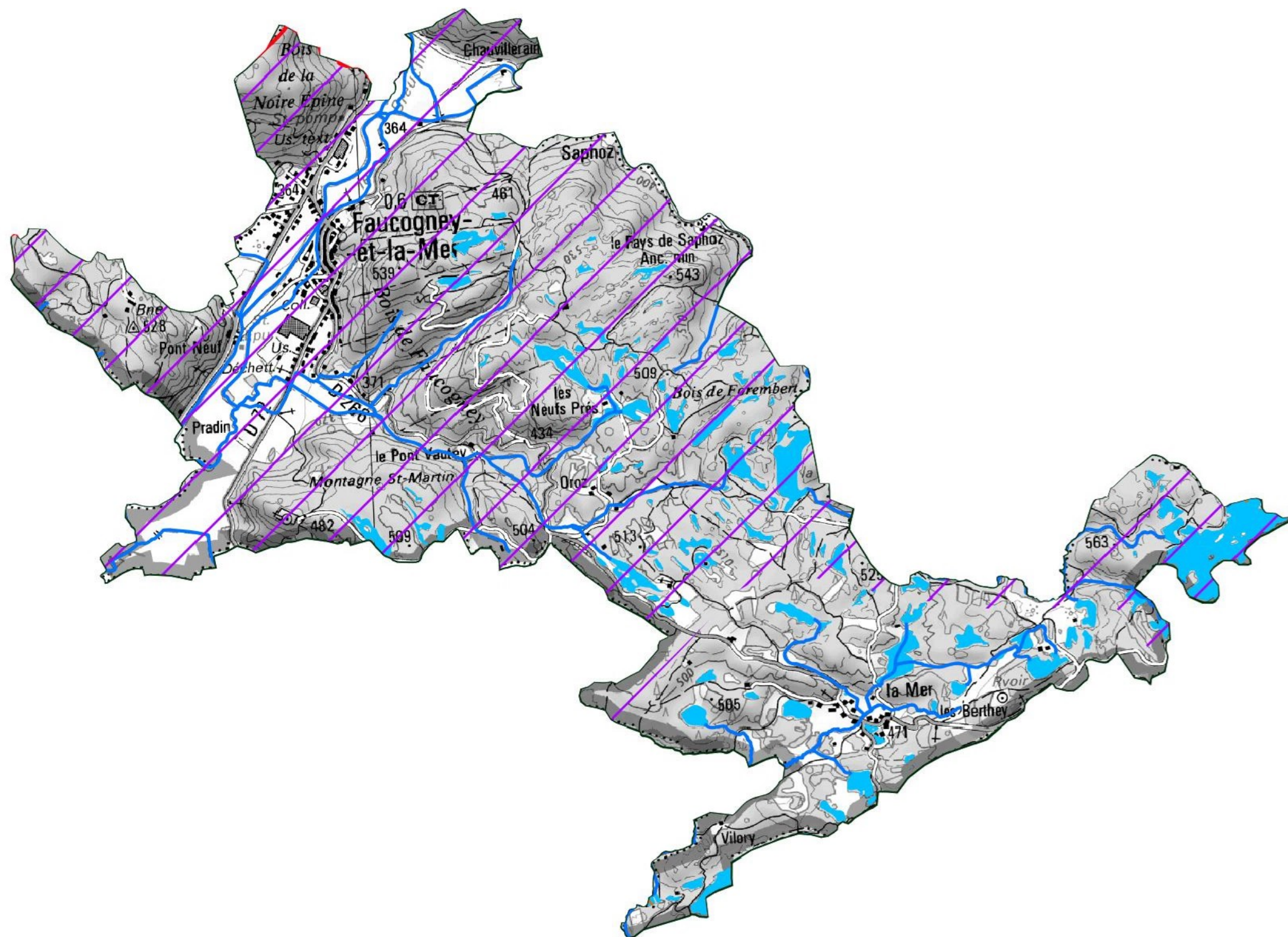
Limite de Bassins versants

— Lanterne

— Ognon



0 0.5 1 km












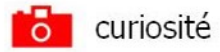




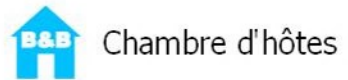
## Activités touristiques Faucogney-et-La-Mer

 Périmètre du site Natura 2000

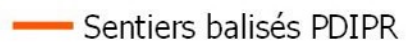
Points touristiques



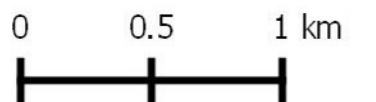
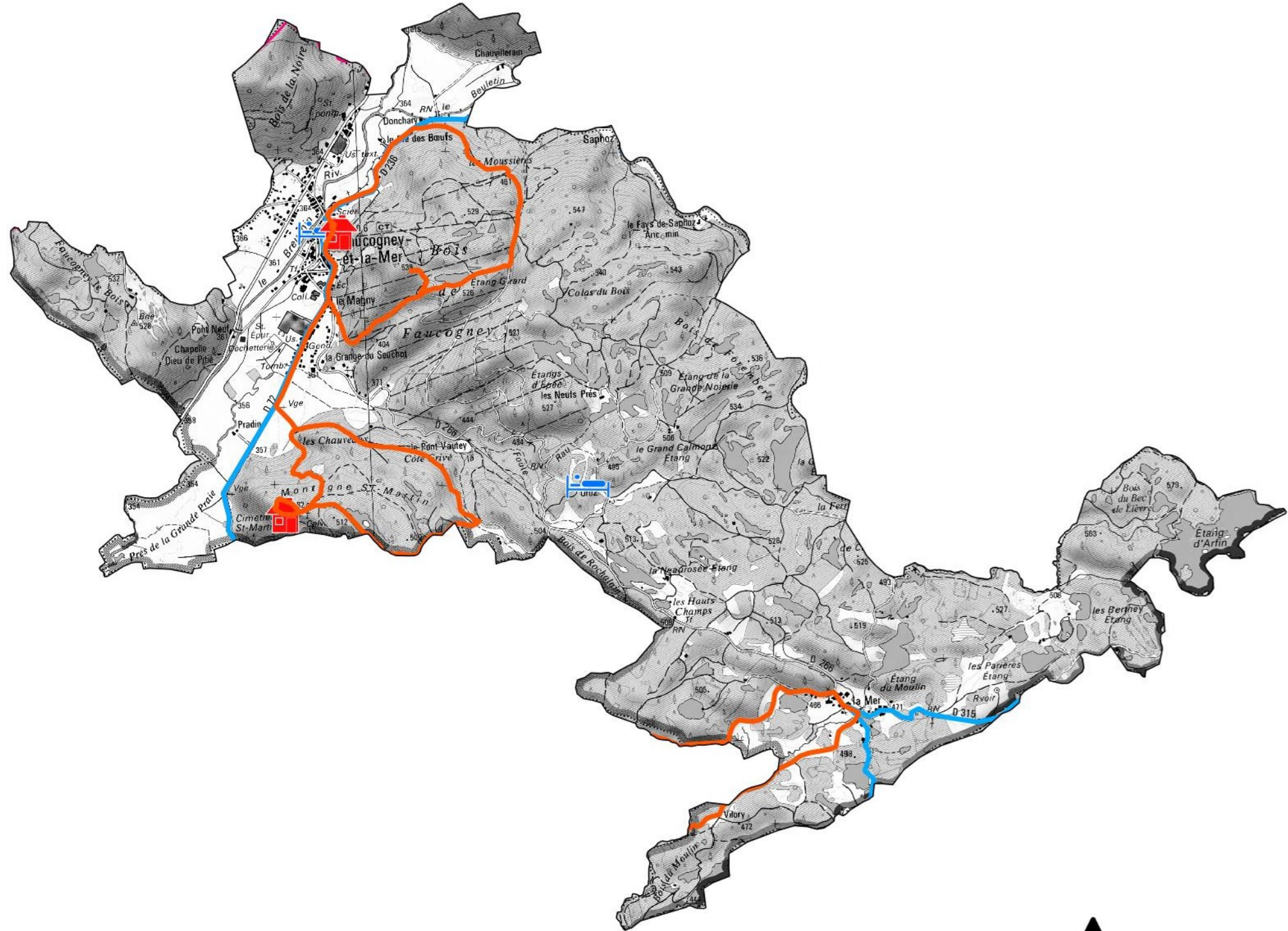
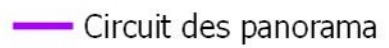
Hébergements



Randonnée pedestre



Routes touristiques








## Etat des connaissances sur les habitats naturels

Faucogney-et-La-Mer

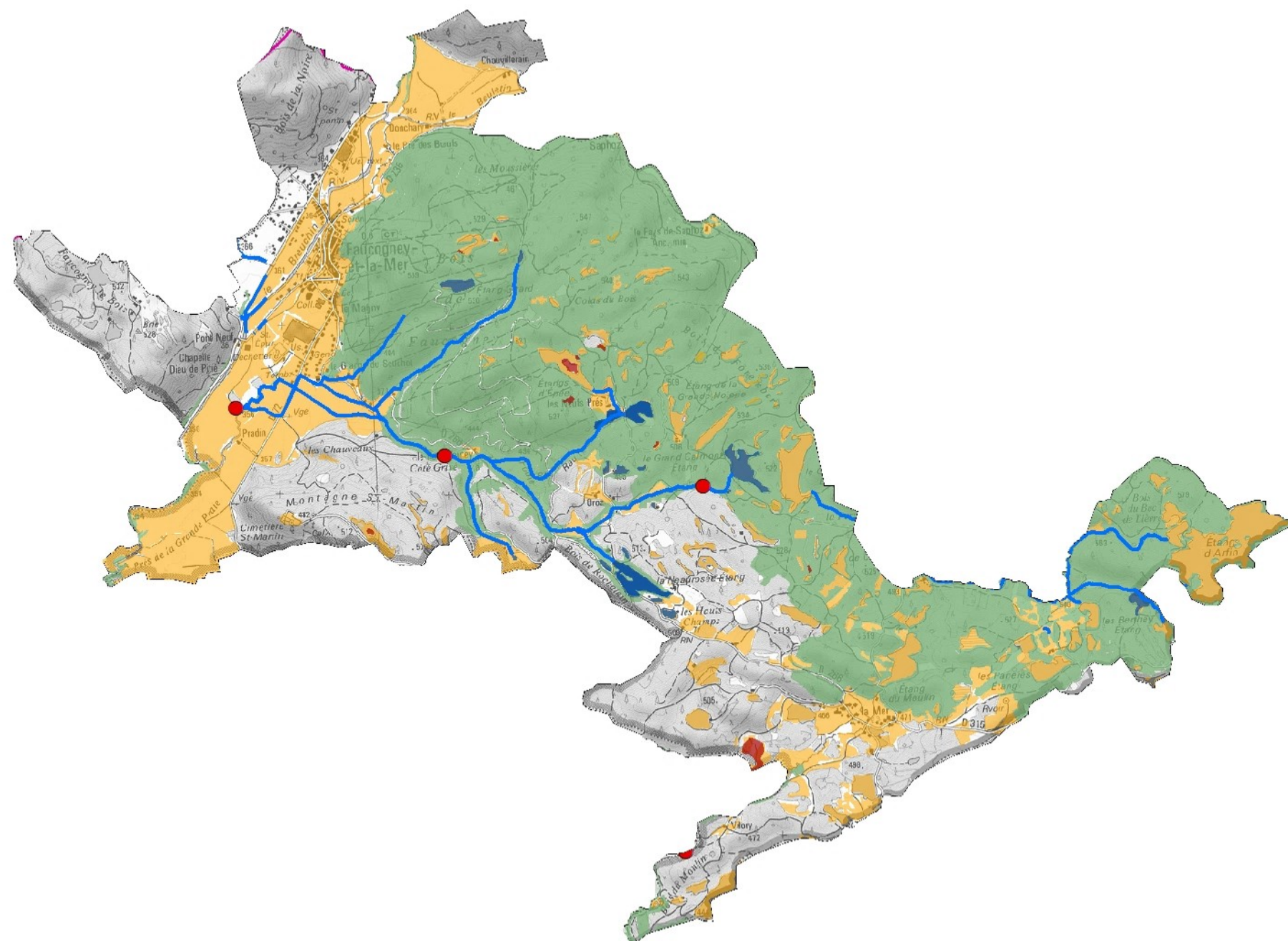
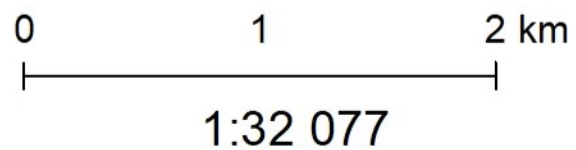
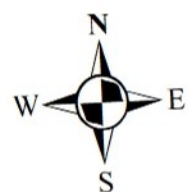
 Périmètre du site Natura 2000

### Cartographies des habitats naturels

-  Inventaires des tourbières (CENFC 96, 2017-2018)
-  Etude et cartographie des milieux ouverts (ECOSCOPI 2008)
-  Etude et cartographie des milieux forestiers (Climax 2013,2014, Biotpe 2015,2016)

### Etudes sur les milieux aquatiques

-  Analyse de la qualité physique des cours d'eau (PNRBV 2016, Teleos 2017)
-  Etudes sur les étangs (EPTB 2007, PNRBV 2016, HTV 2017)
-  Analyses biologiques (IBGN Sialis 2014, Mag20 Teleos 2017)
-  Analyses thermiques (PNRBV 2012-2017)












## Classification des habitats naturels d'après la Directive Natura 2000 "Habitats, Faune, Flore"

Faucogney-et-La-Mer

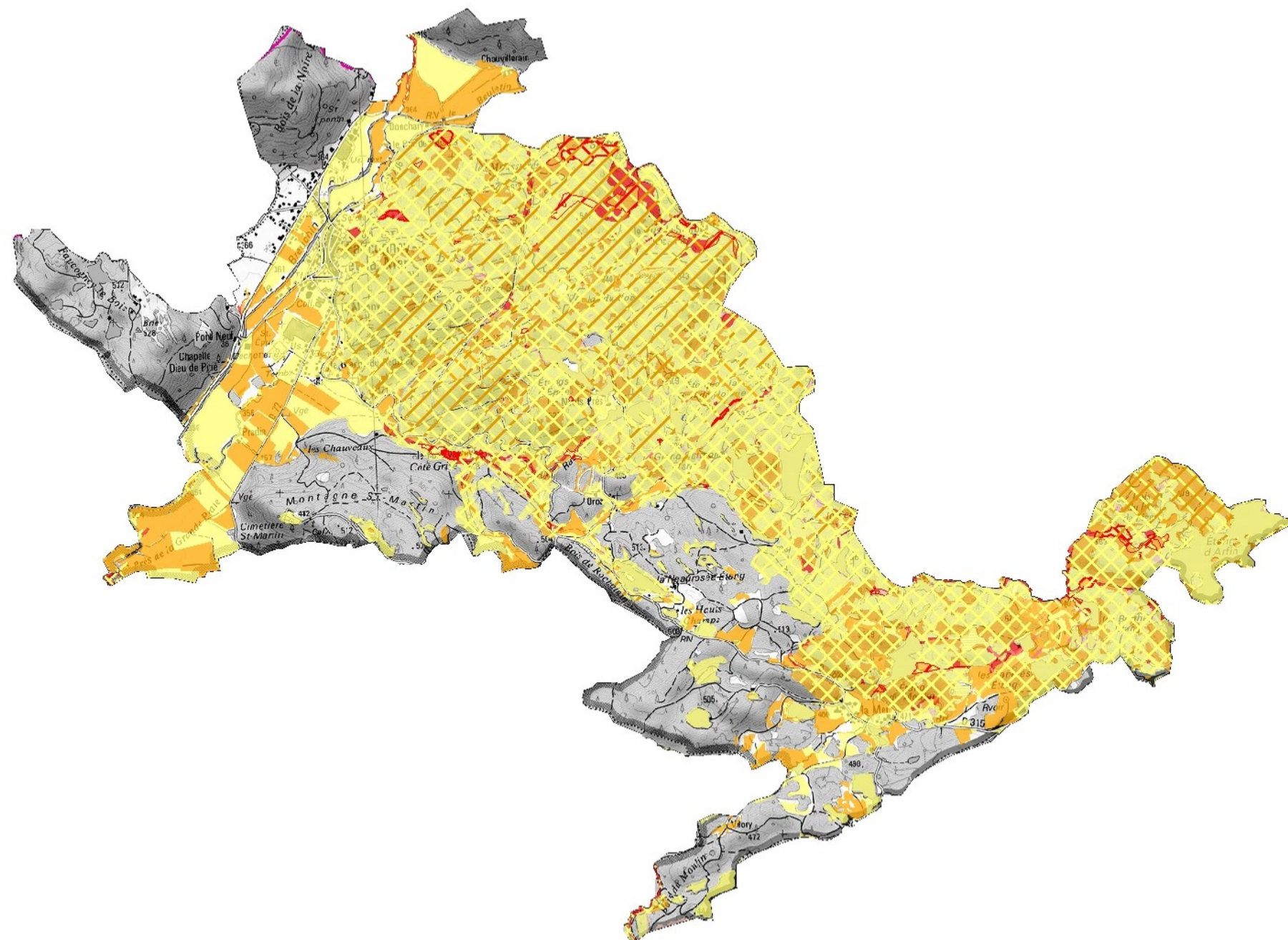
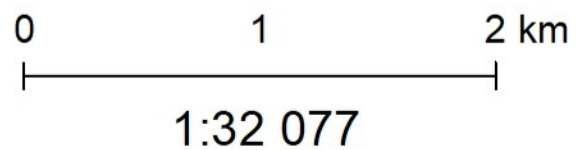
 Périmètre du site Natura 2000

### Habitats dominants

-  hors Directive
-  intérêt régional
-  intérêt communautaire
-  intérêt prioritaire

### Habitats secondaires en mosaïque

-  hors Directive
-  intérêt régional
-  intérêt communautaire
-  intérêt prioritaire







## Diagnostic de la continuité écologique des bassins versants

Bassin versant du ruisseau du Beuletin (Bringandoux), commune de Esmoulières, Faucogney-et-La-Mer et Ternuay

Périmètre site Natura 2000

Franchissabilité des ouvrages

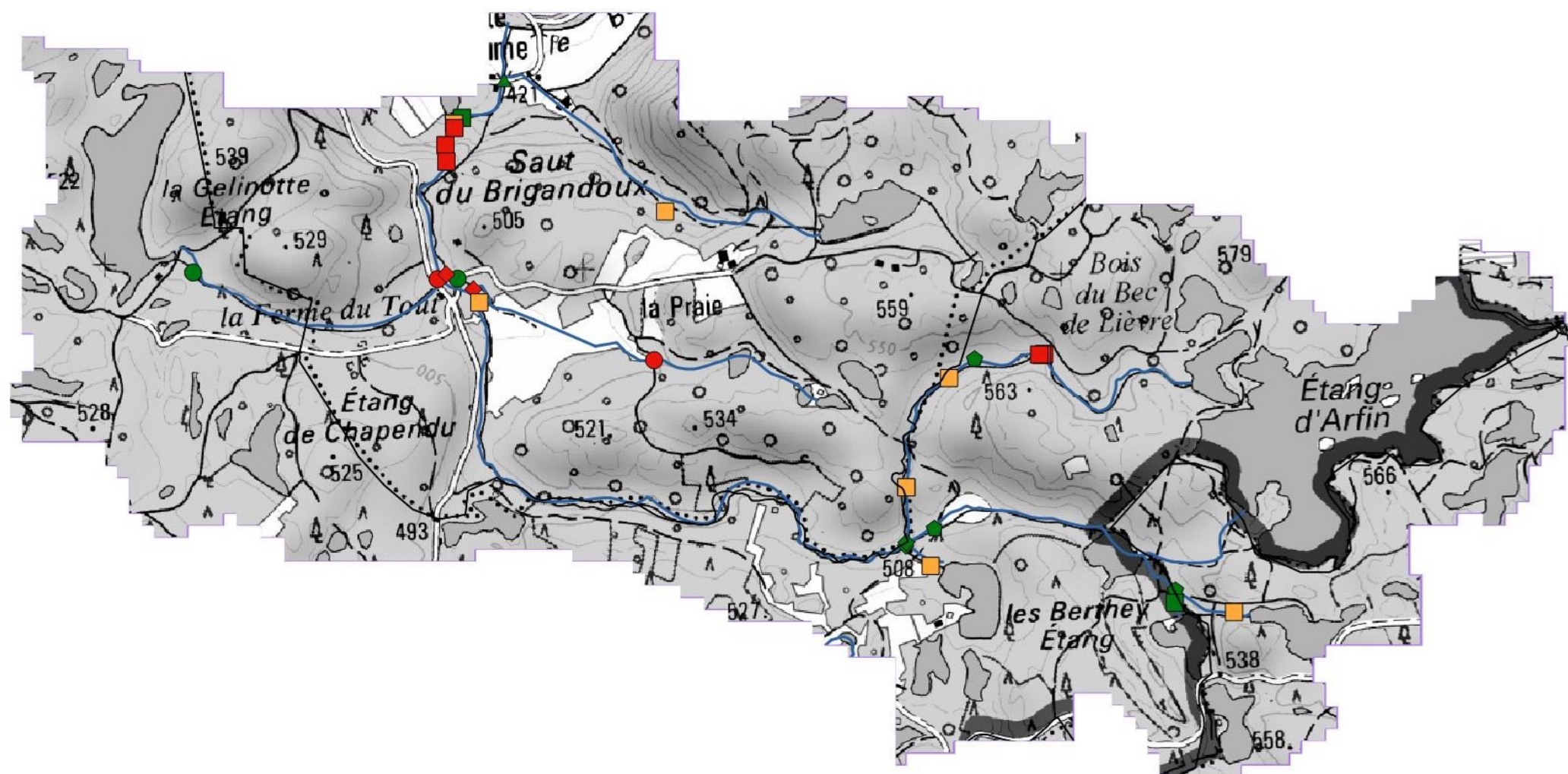
- Franchissable
- Difficilement franchissable
- Infranchissable
- Partiellement franchissable

Types d'ouvrages

- Entrées et sorties d'eau
- Buses
- Gués
- Ponts
- Seuils
- Piétinements



0 0.25 0.5 km







## Diagnostic de la continuité écologique des bassins versants

Bassin versant du ruisseau de la Mer commune de Faucogney-et-La-Mer

Périmètre site Natura 2000

Franchissabilité des ouvrages

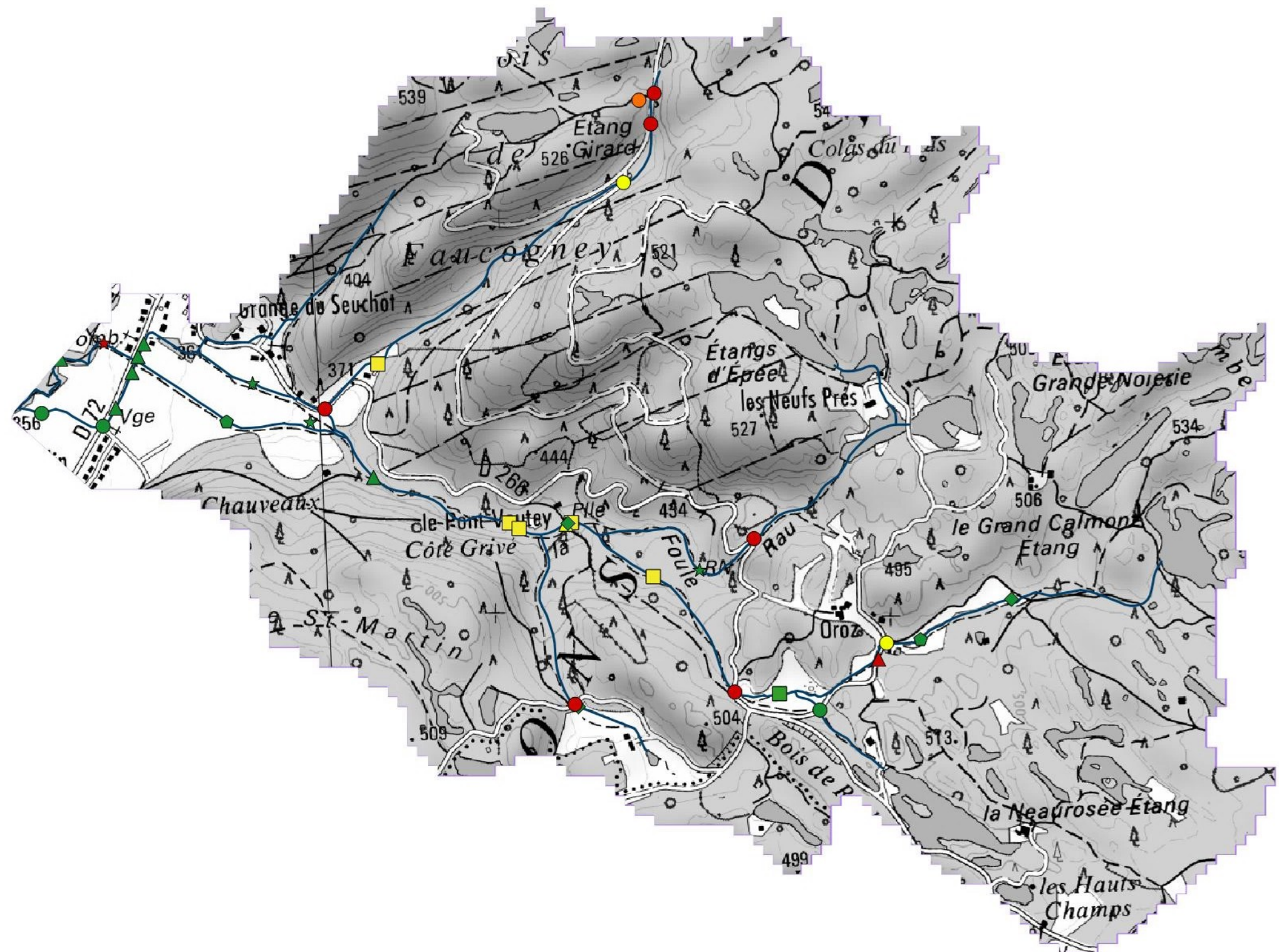
- Franchissable
- Difficilement franchissable
- Infranchissable
- Partiellement franchissable

Types d'ouvrages

- Entrées et sorties d'eau
- Buses
- Gués
- Ponts
- Seuils
- Piétinements



0 0.25 0.5 km















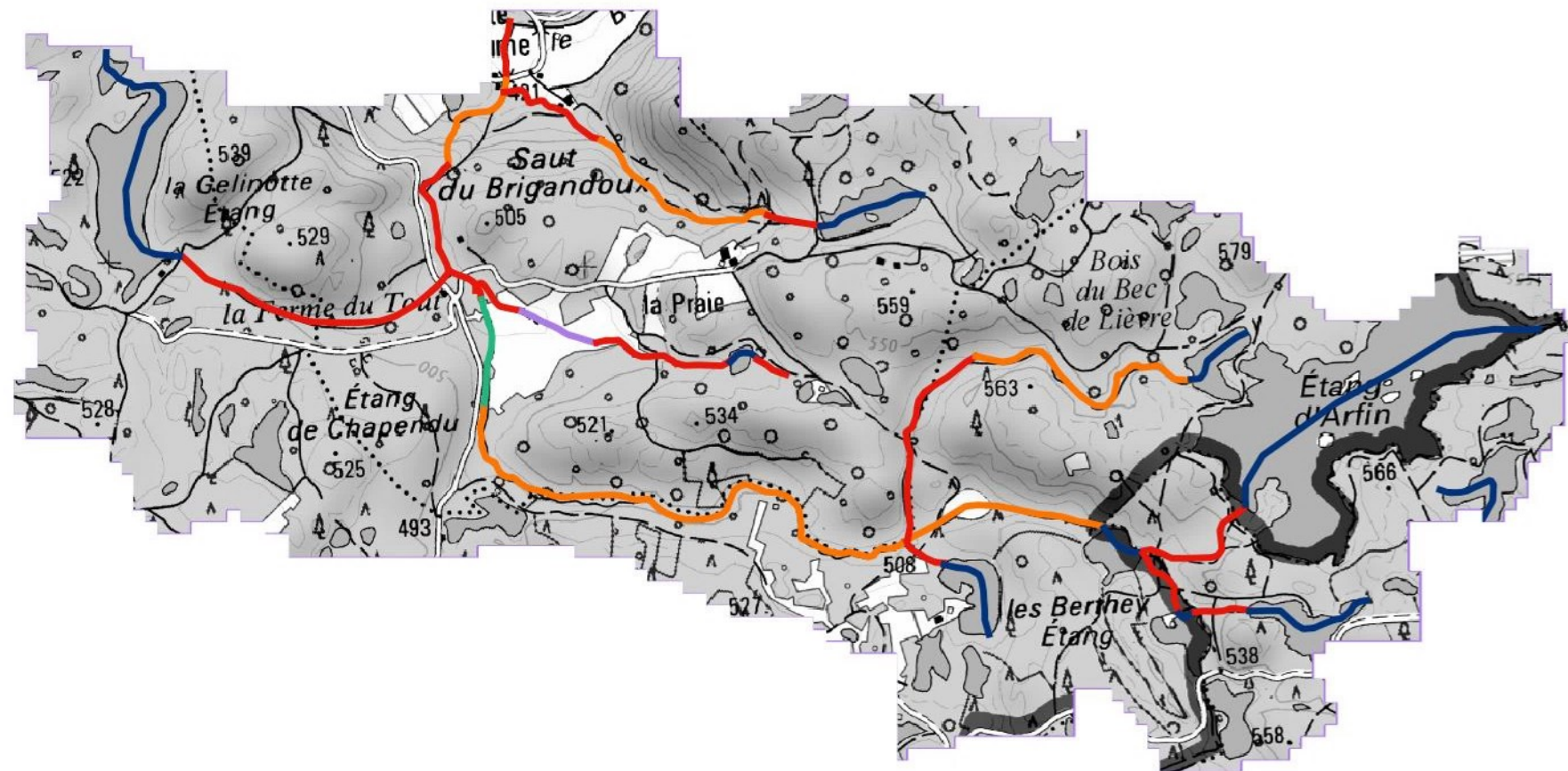

## Diagnostic du fonctionnement hydromorphologique des cours d'eau de tête de bassins versants

Ruisseau du Beuletin (Brigandoux), commune de Esmoulières, Faucogney-et-La-Mer et Ternuay

-  Périmètre site Natura 2000
-  Limites de bassins versants
- Fonctionnalité physique des cours d'eau
  -  Bonne
  -  Moyenne
  -  Mauvaise
  -  étang
  -  à sec
  -  Très mauvaise



0 0.25 0.5 km















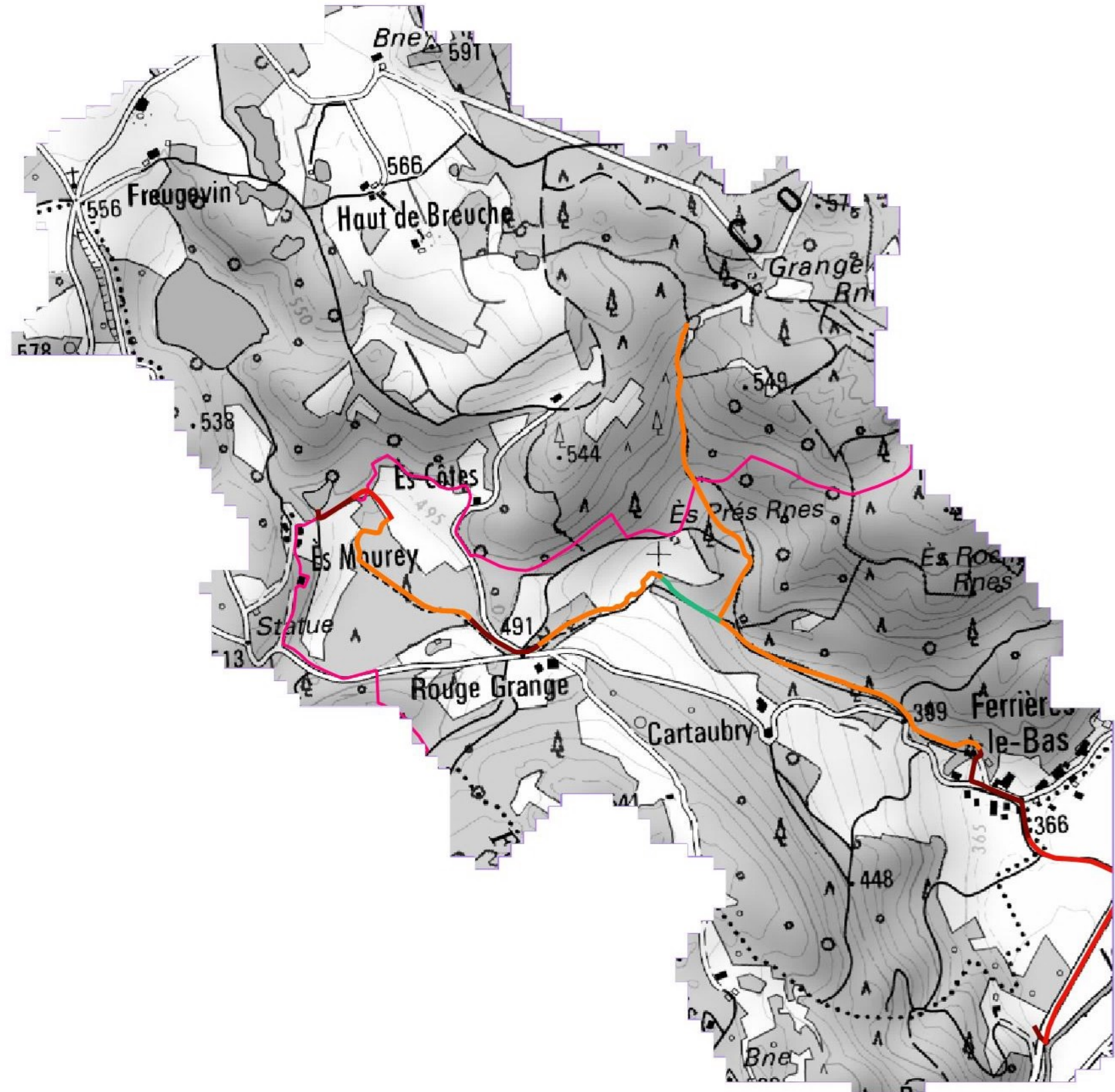
## Diagnostic du fonctionnement hydromorphologique des cours d'eau de tête de bassins versants

*Ruisseau de la Ferrière, commune de Amont-et-Effreney et Faucogney-et-La-Mer*

-  Périmètre site Natura 2000
-  Limites de bassins versants
- Fonctionnalité physique des cours d'eau
  -  Bonne
  -  Moyenne
  -  Mauvaise
  -  étang
  -  à sec
  -  Très mauvaise



0 0.5 1 km











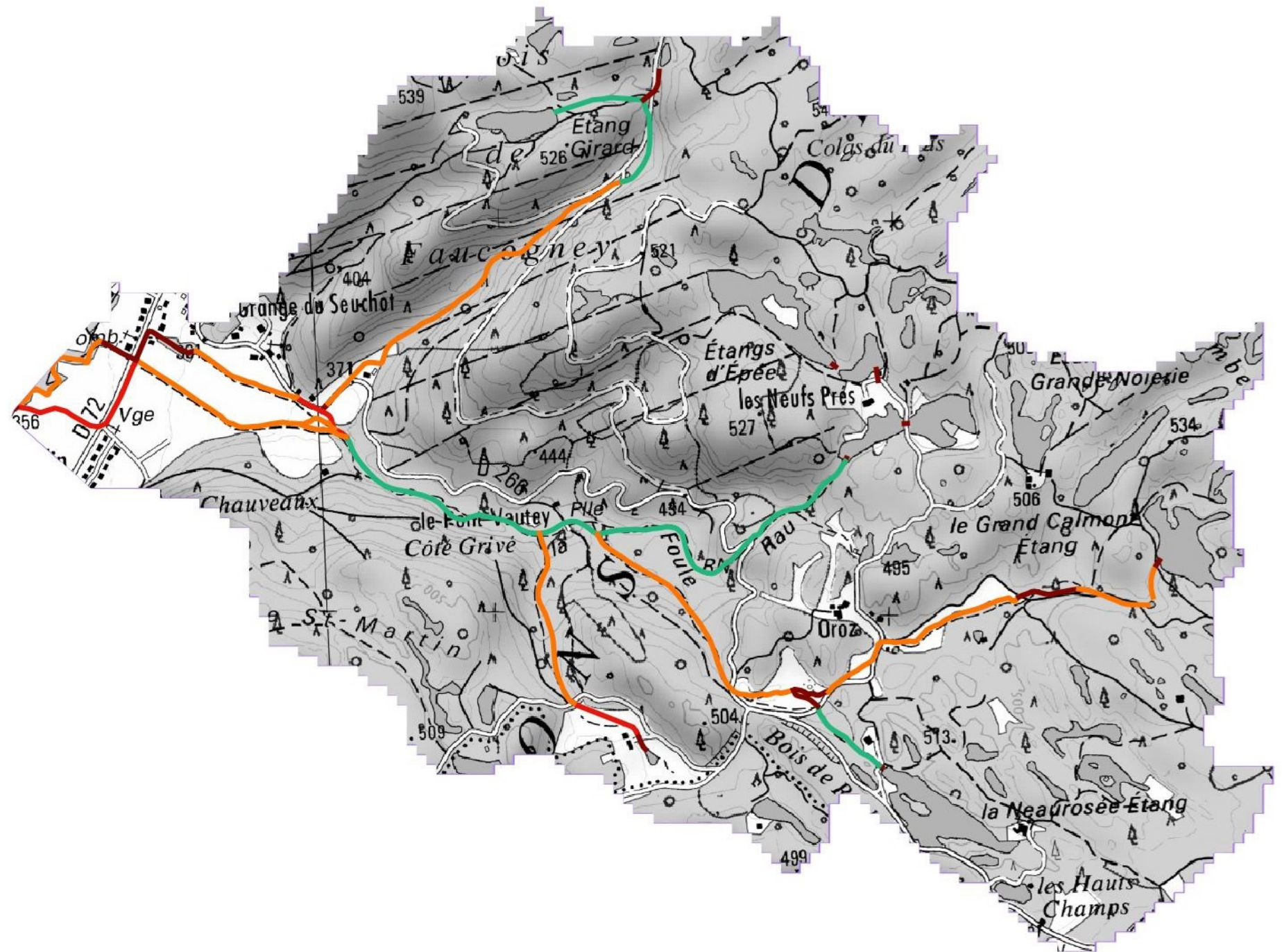
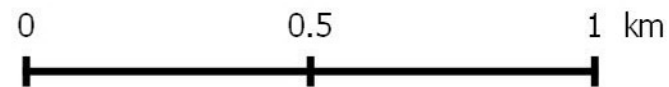




## Diagnostic du fonctionnement hydromorphologique des cours d'eau de tête de bassins versants

Ruisseau de la Mer, commune de Faucogney-et-La-Mer

-  Périmètre site Natura 2000
-  Limites de bassins versants
- Fonctionnalité physique des cours d'eau
  -  Bonne
  -  Moyenne
  -  Mauvaise
  -  étang
  -  à sec
  -  Très mauvaise
















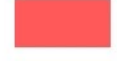





## Répartition des atteintes principales sur les habitats d'intérêt communautaire connus

Commune de Faucogney-et-La-Mer

 Périmètre du site Natura 2000

### Les atteintes

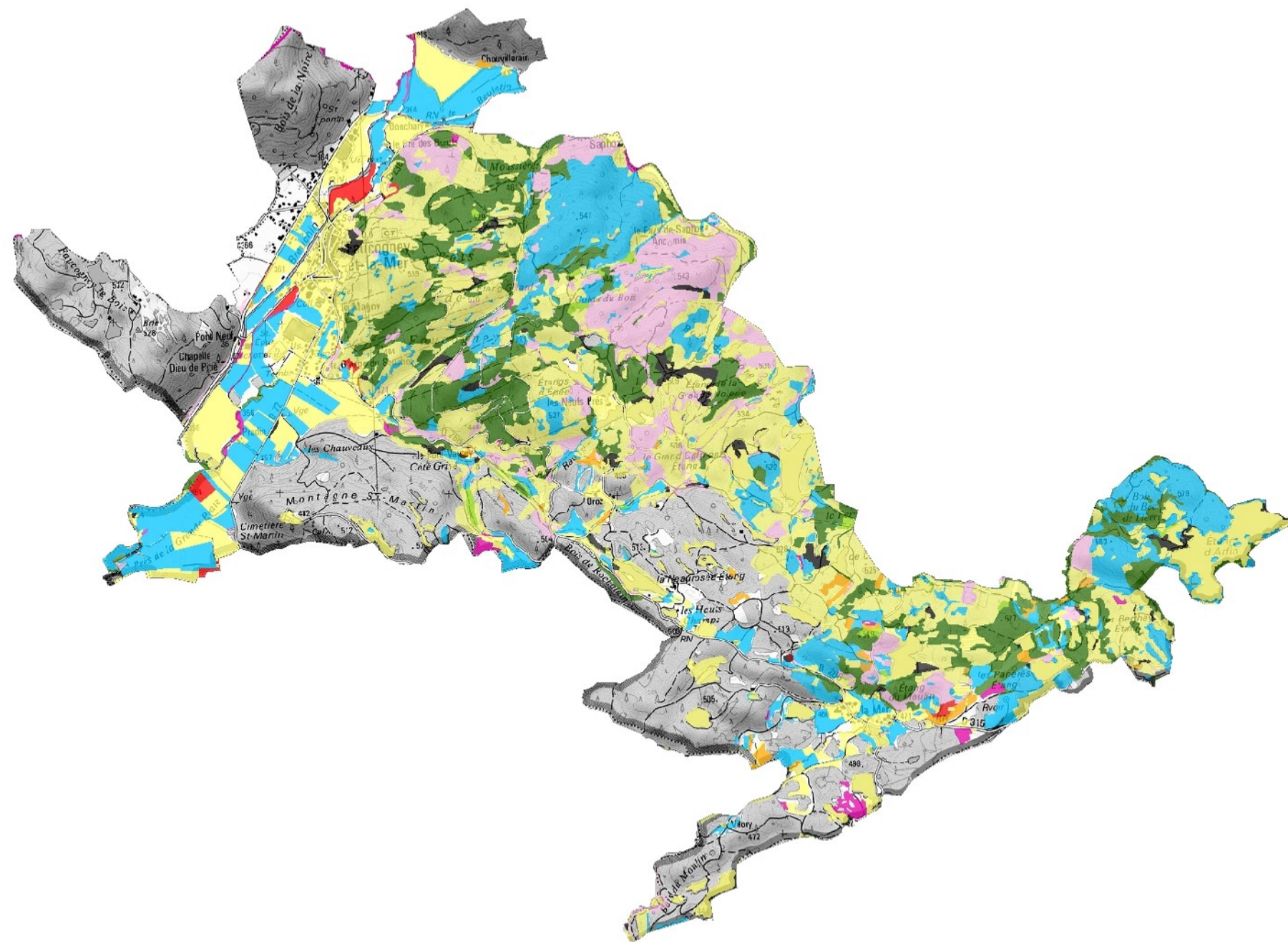
#### des habitats principaux d'intérêt communautaire

-  non concerné (milieux naturels non ciblés par Natura 2000)
-  aucune
-  enrésinement
-  coupe, abattage
-  intensification
-  deprise
-  espèces exotiques
-  autres atteintes
-  inconnue
-  Non étudié



0 1 2 km

1:32 077










## Secteurs et espèces sensibles connus au sein du site Natura 2000

Commune de Faucogney-et-La-Mer

 Périmètre du site Natura 2000



### Enjeux espèces

-  Enjeu de quiétude de la faune
-  Présence d'espèces rares ou menacées en Europe

### Enjeux milieux naturels rares ou menacés ciblés par Natura 2000

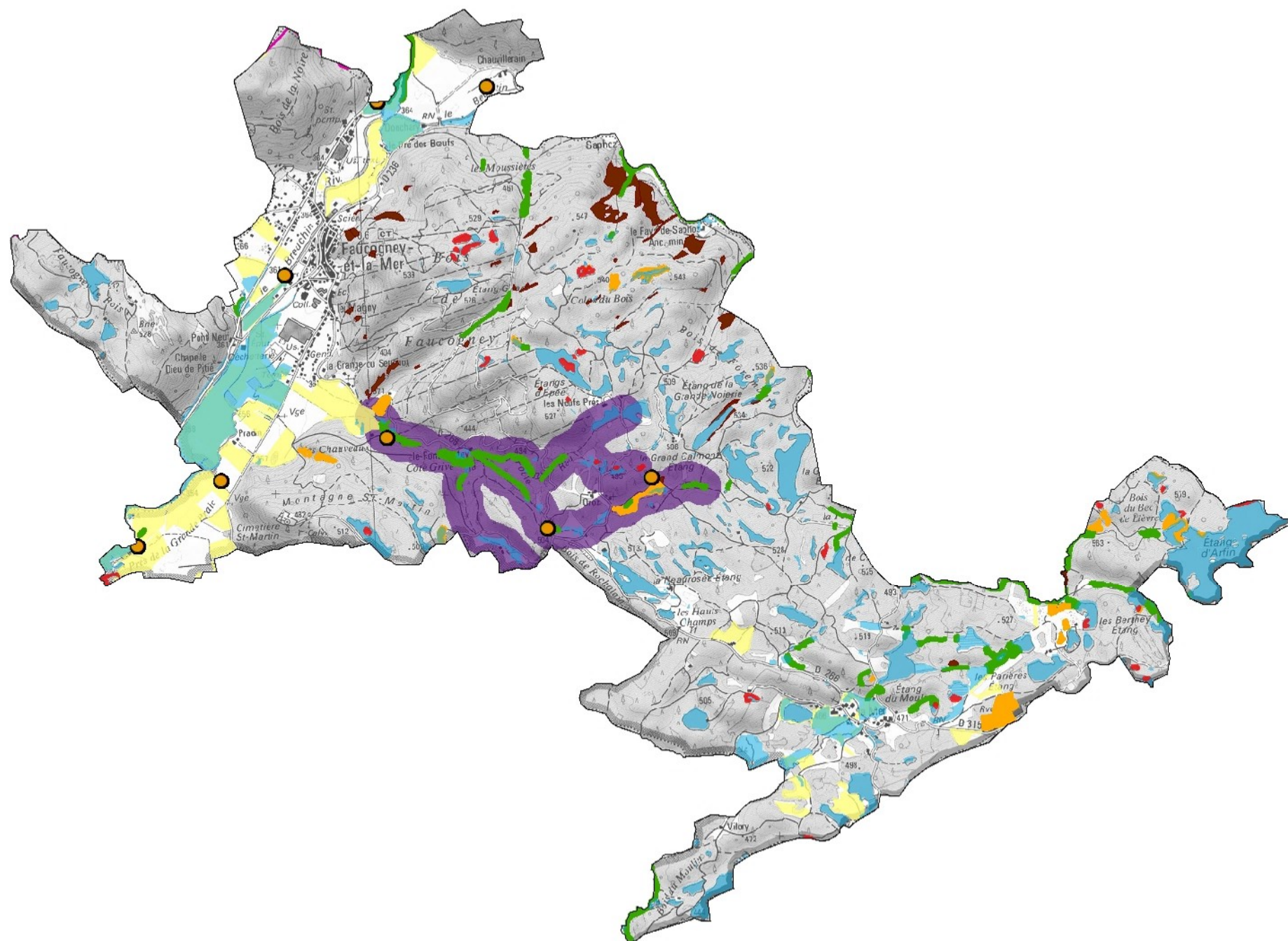
-  Zones tourbeuses
-  Milieux humides
-  Forêts alluviales prioritaires
-  Milieux ouverts sensibles
-  Milieux rupestres

### Milieux naturels réglementés par l'Etat

-  Prairies permanentes sensibles
-  Cours d'eau sensibles



0 1,75 3,5 Km






# Site Natura 2000 "Plateau des mille étangs"




## Bilan des actions réalisées


dans le cadre de l'animation du site Natura 2000 et du programme LIFE "Continuité écologique"


### Commune de Faucogney-et-La-Mer


 Périmètre du site Natura 2000


 Panneau d'informations Natura 2000


### Aménagements dans le cadre du LIFE

 moine hydraulique

 buse enterée


 pont


 cloture et abreuvoir

 panneau d'informations




### Contrats forestiers Natura 2000

 F03i Régénération dirigée

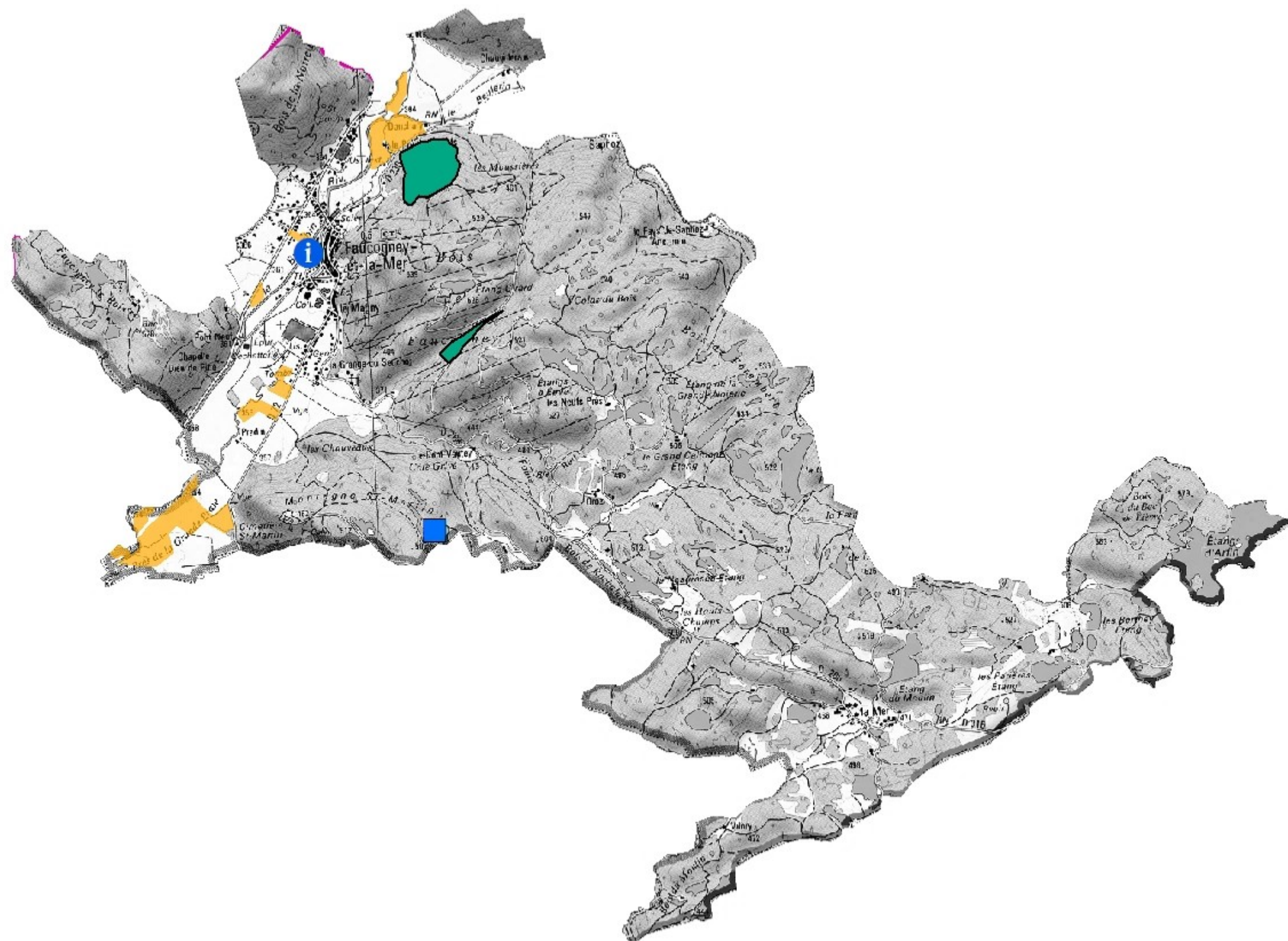
 F12i Ilôt de senescence

### Mesures Agri-Environnementales

 Parcelles pré-engagées en MAE

### Charte Natura 2000

 Parcelles engagées charte Natura 2000



0 0,75 1,5 Km

1:40 008

