

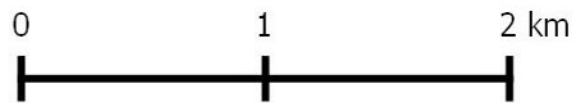
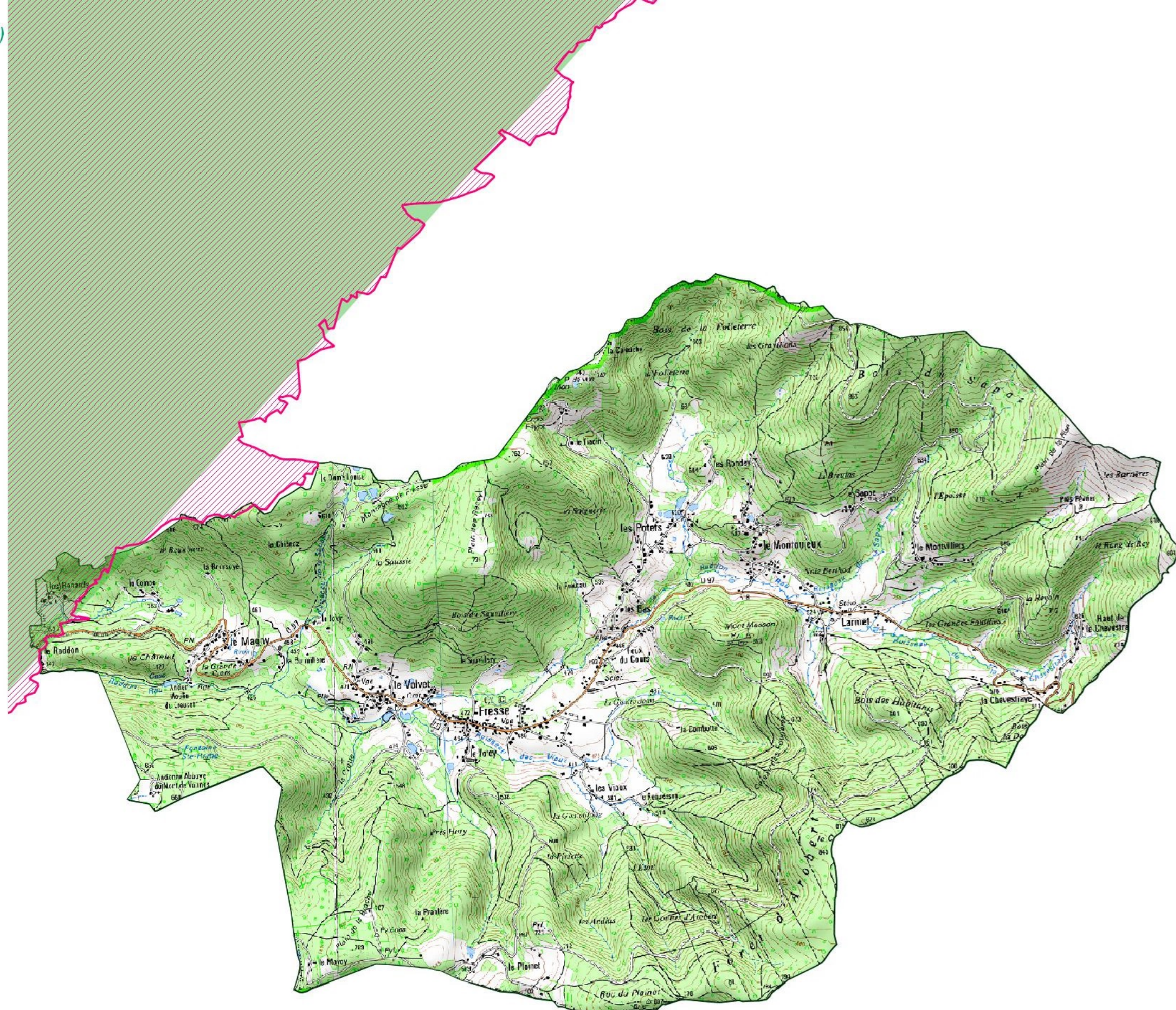




Ajustement du périmètre du site Natura 2000

Commune de Fresse

-  Périmètre ajusté du site Natura 2000 (ZSC et ZPS)
-  Ancien périmètre Natura 2000





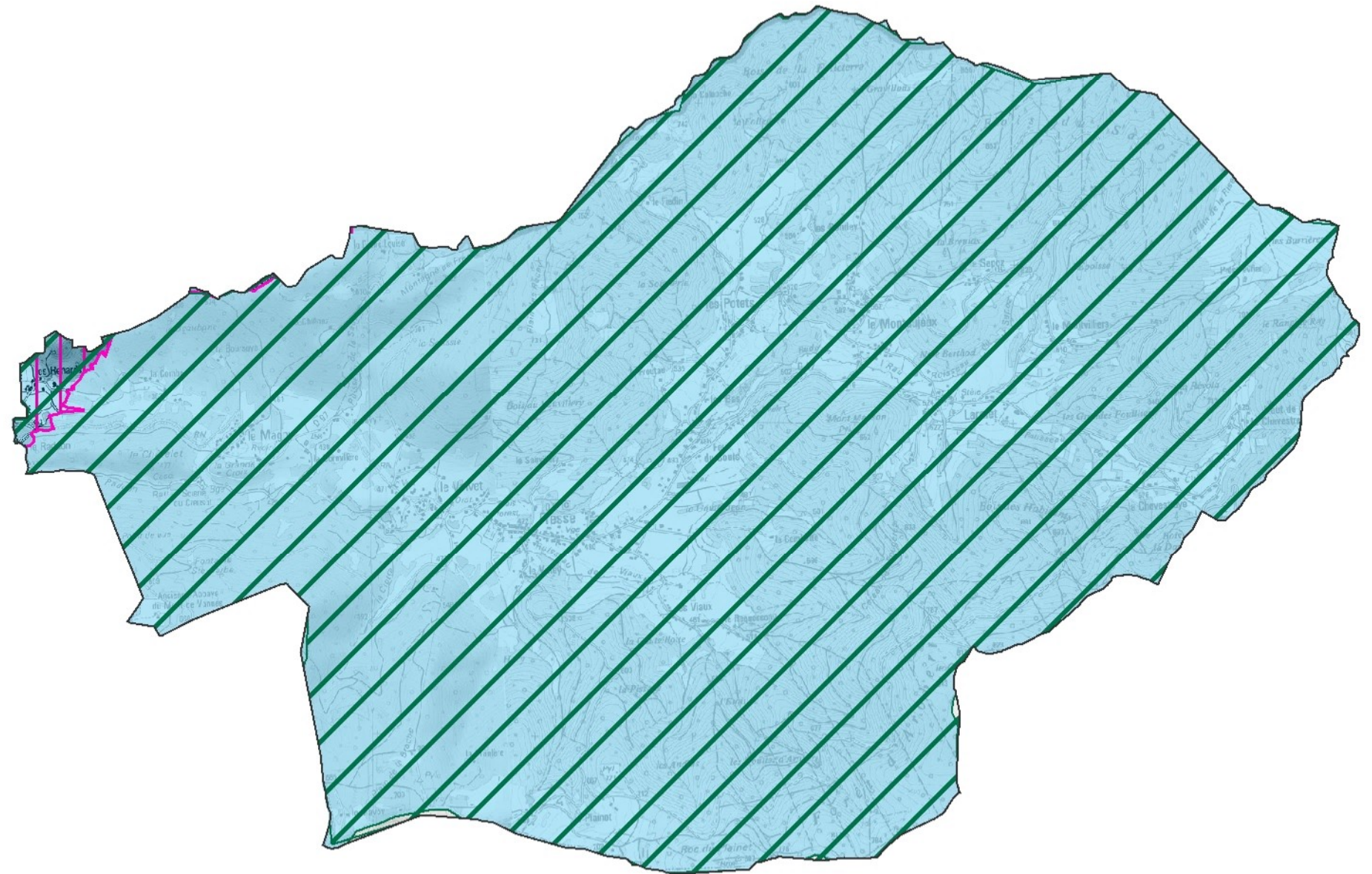
Limites administratives

Commune de Fresse

-  Limites communales
 -  Parc naturel régional des Ballons des Vosges
 -  Site Natura 2000
- Limites intercommunales**
-  Communauté de Communes des Mille Etangs
 -  Communauté de Communes du Pays de Lure
 -  Communauté de Communes du Triangle Vert
 -  Communauté de communes du Pays de Luxeuil



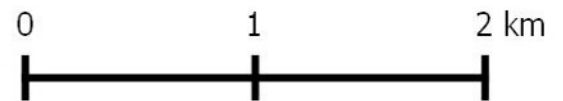
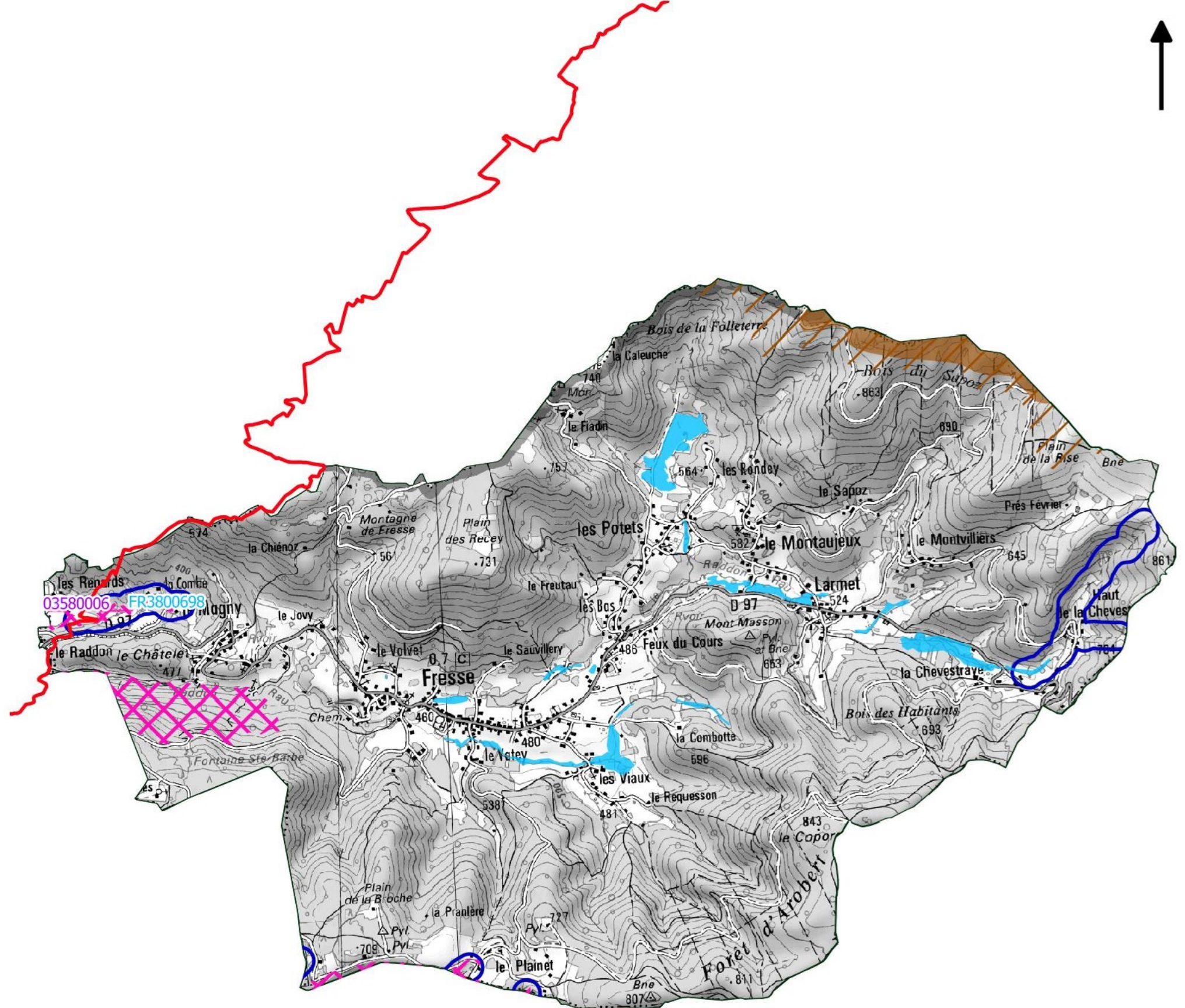
0 1 2 Km






Zonages environnementaux

Commune de Fresse

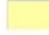




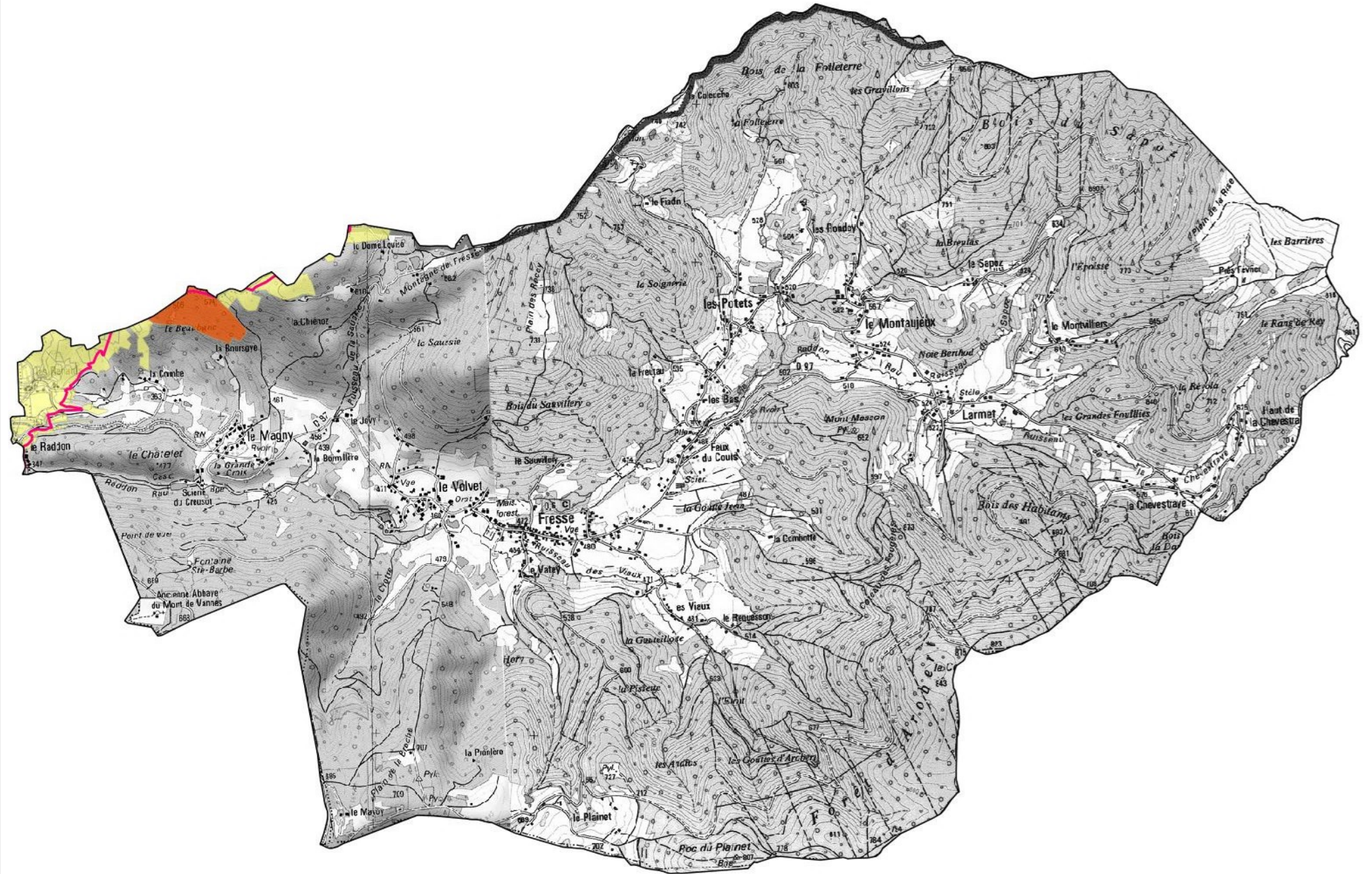
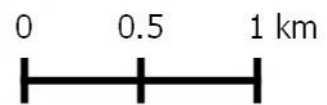


Répartition foncière Fresse

 Périmètre du site Natura 2000

Type de propriété

-  privée
-  communale et EPCI
-  domaine de l'Etat





Bassin hydrographique et Réseau hydrologique

Commune de Fresse

— Cours d'eau

■ Etangs

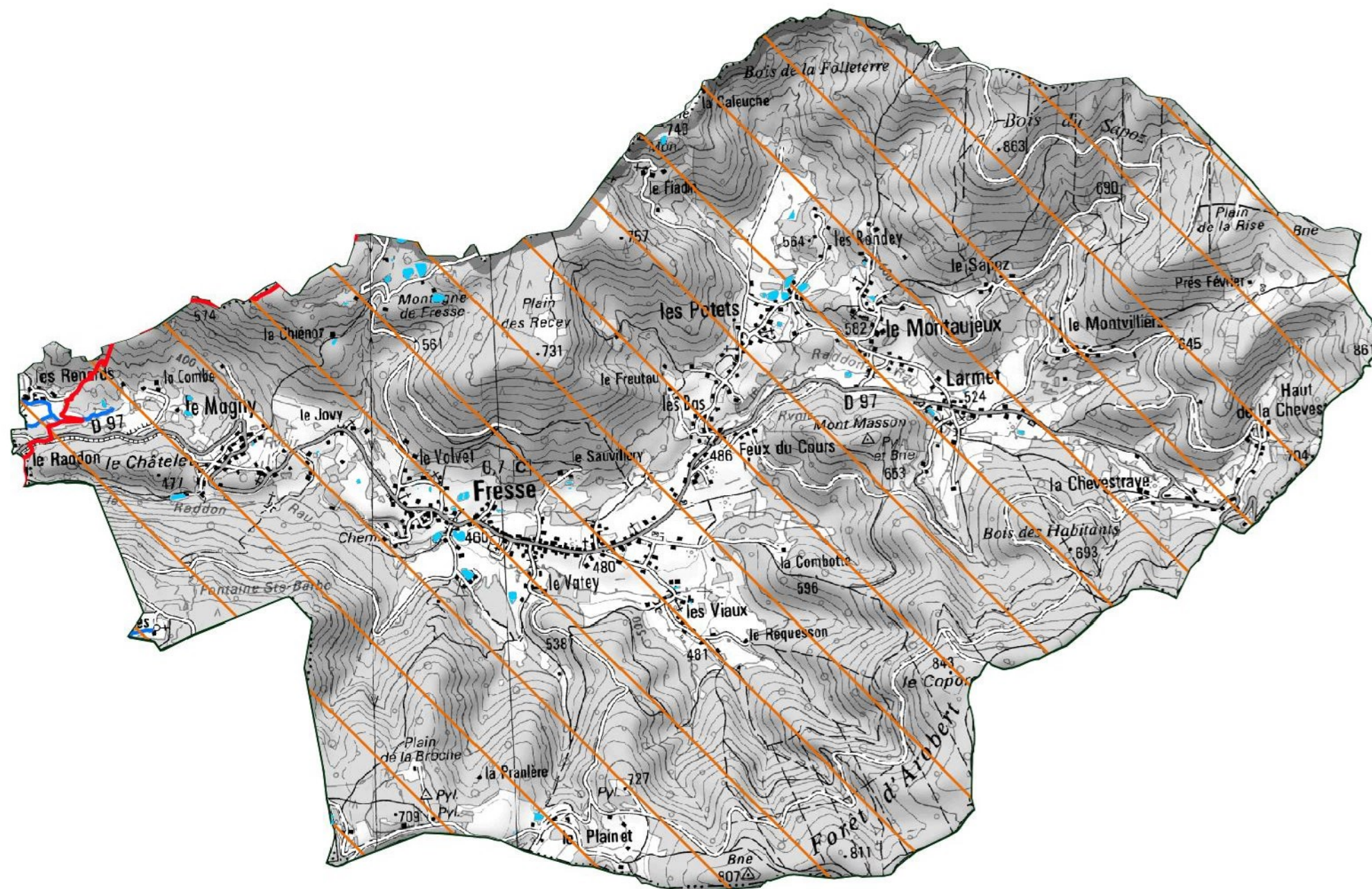
Limite de Bassins versants

— Lanterne

— Ognon



0 0.5 1 km





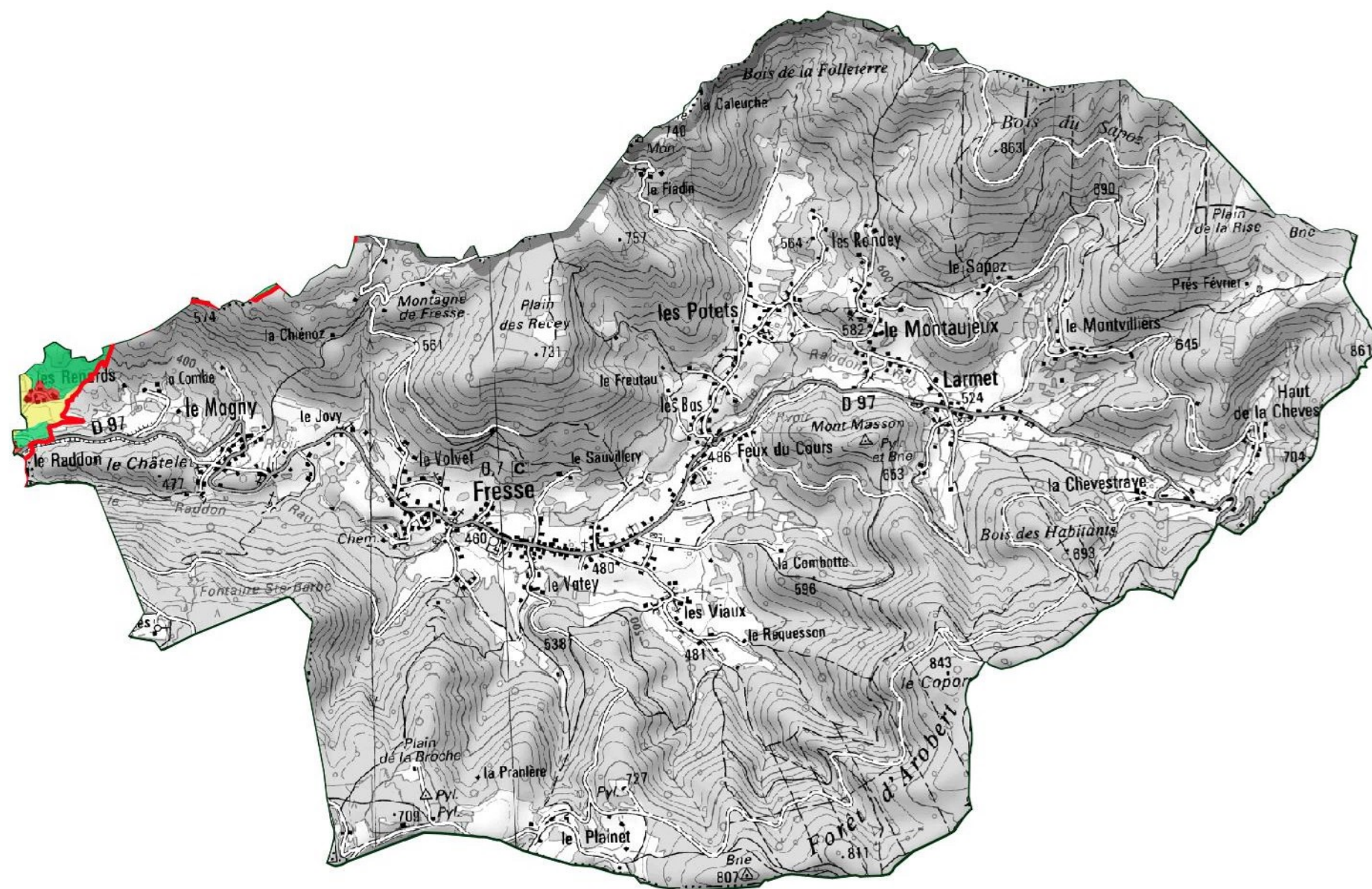
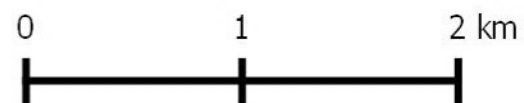
Occupation du sol

Fresse

Périmètre du site Natura 2000

Grands types d'occupation du sol

- Cultures
- Etangs
- Forêts
- Haies
- Infrastructures
- Landes
- Milieux rupestres
- Prairies
- Rivières
- Sols nus
- Zones humides
- Zones urbanisées

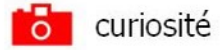




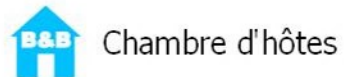
Activités touristiques Fresse

Périmètre du site Natura 2000

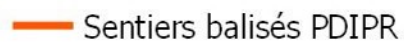
Points touristiques



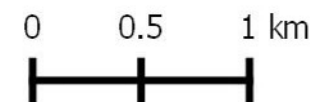
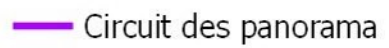
Hébergements



Randonnée pedestre




Routes touristiques





Etat des connaissances sur les habitats naturels

Fresse

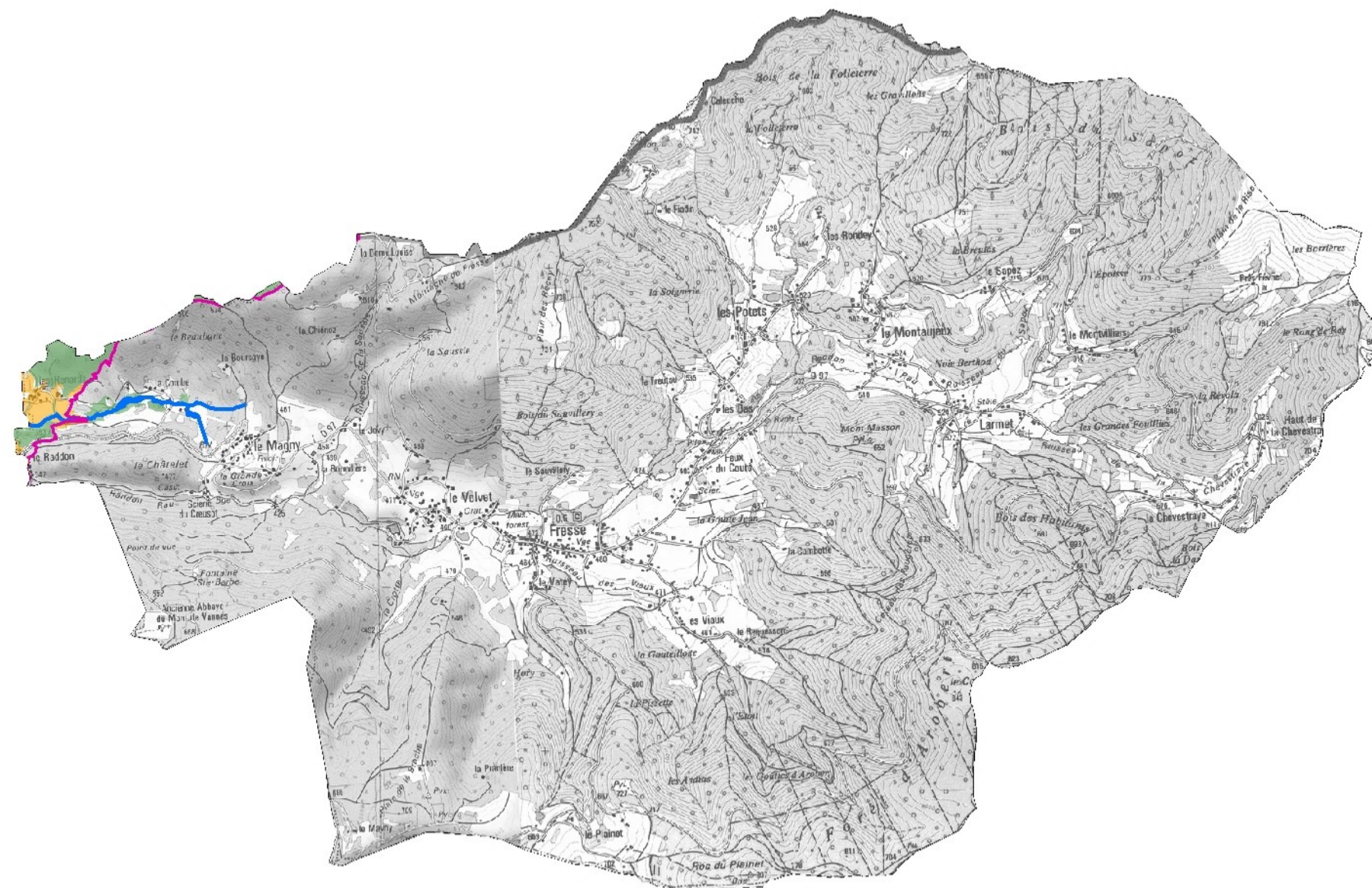
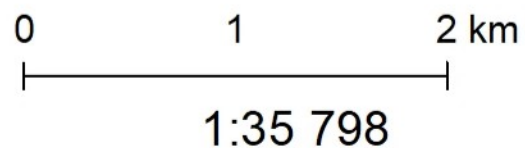
 Périmètre du site Natura 2000

Cartographies des habitats naturels

-  Inventaires des tourbières (CENFC 96, 2017-2018)
-  Etude et cartographie des milieux ouverts (ECOSCOP 2008)
-  Etude et cartographie des milieux forestiers (Climax 2013,2014, Biotpe 2015,2016)

Etudes sur les milieux aquatiques

-  Analyse de la qualité physique des cours d'eau (PNRBV 2016, Teleos 2017)
-  Etudes sur les étangs (EPTB 2007, PNRBV 2016, HTV 2017)
-  Analyses biologiques (IBGN Sialis 2014, Mag20 Teleos 2017)
-  Analyses thermiques (PNRBV 2012-2017)





Etat des connaissances sur les espèces Les études et suivis menés

Fresse

Prospections amphibiens sur l'ensemble du site (BE Craney, 2009)

● Sites de prospections chiroptères (CPEPESC 2011)

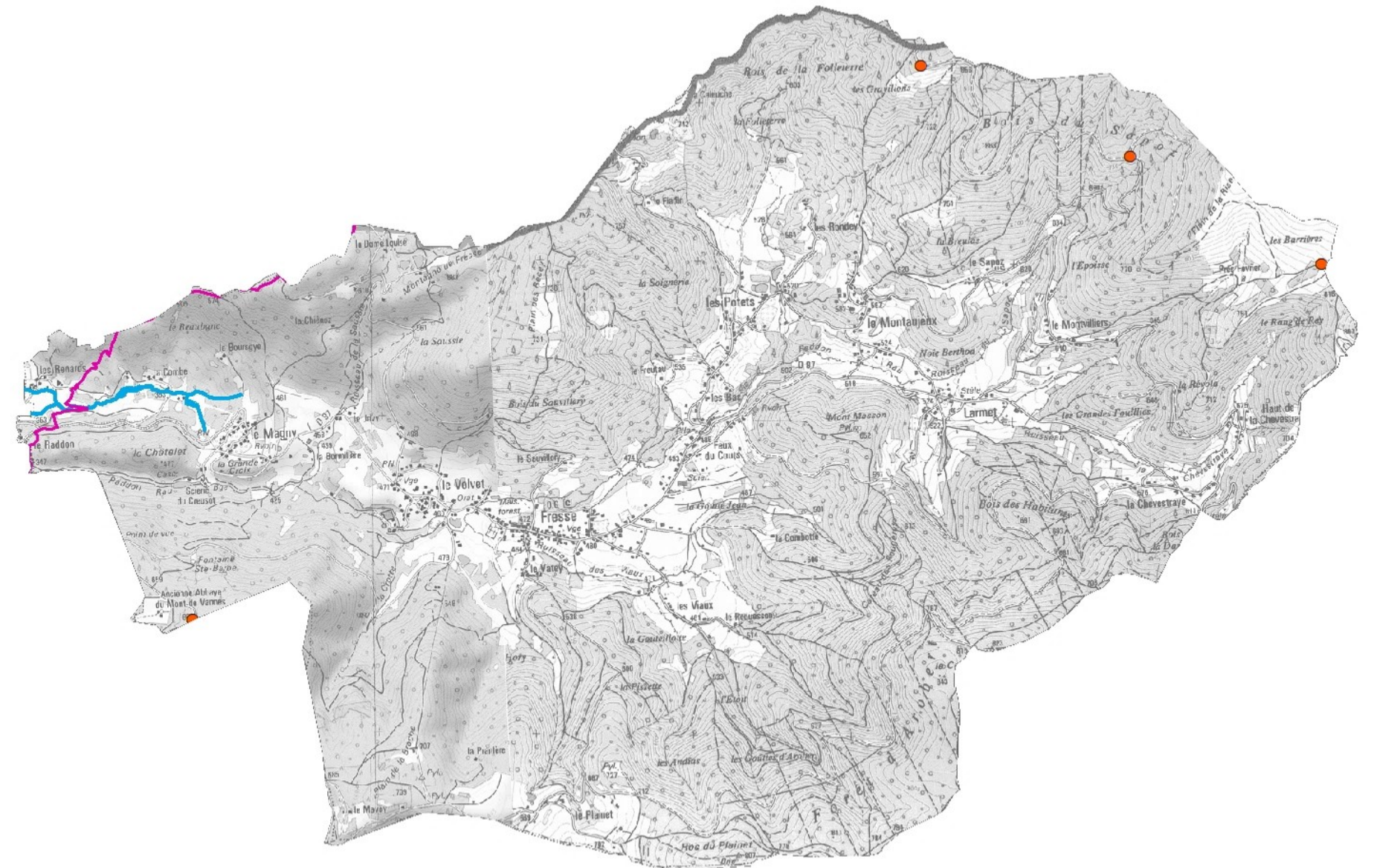
● Etude Oiseaux (BCD, 2012)

● Pêches électriques (PNRBV, ONEMA, 2012, Fédération pêche 70, 2018)

— Prospections écrevisses (PNRBV-Fédération pêche 70 2016-2017)

— Prospections entomologiques (CBNFC, 2016)

— Prospections espèces PRA (CBNFC)




1:35 595



**Classification des habitats naturels
d'après la Directive Natura 2000 "Habitats, Faune, Flore"**

Fresse

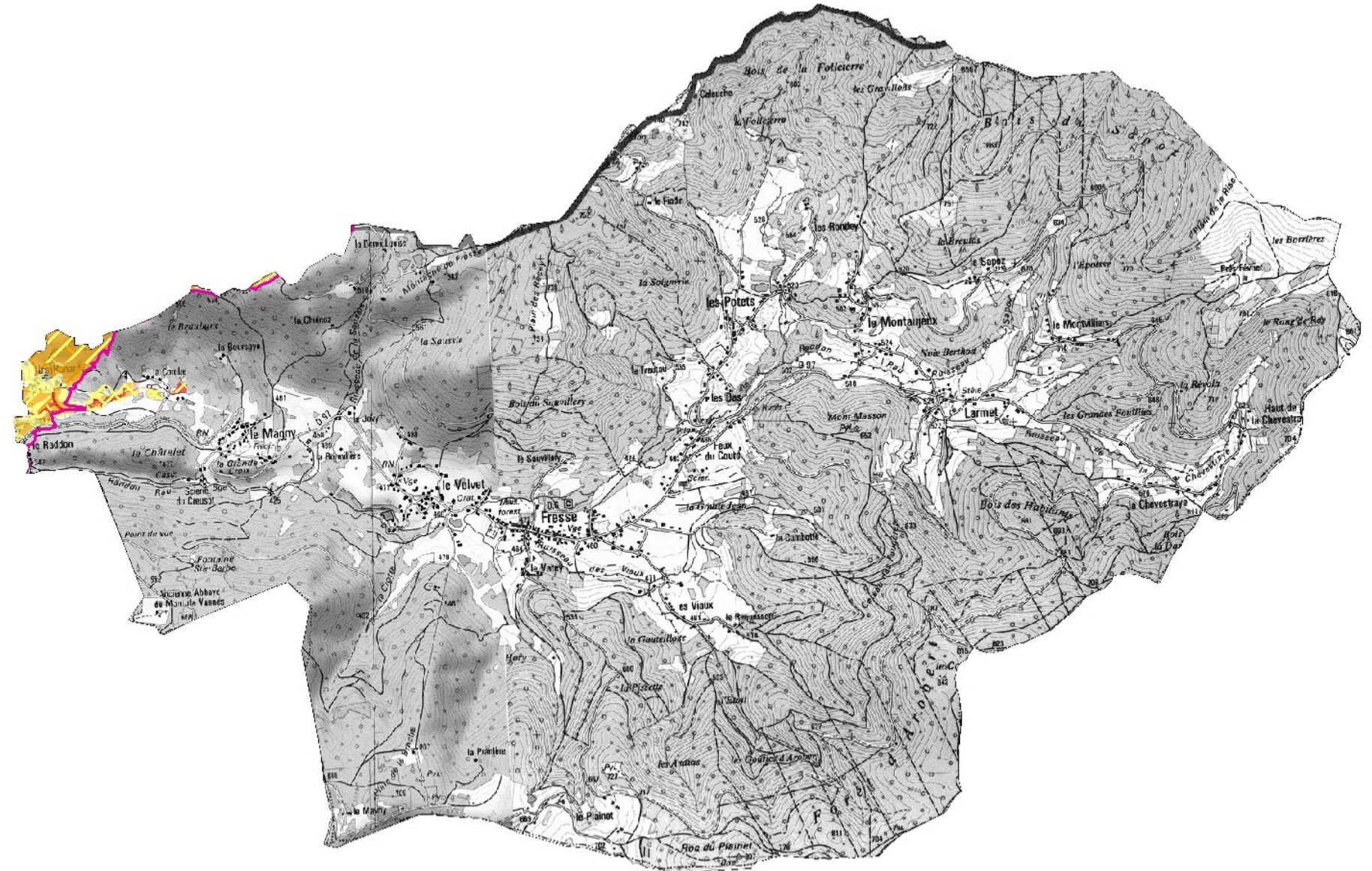
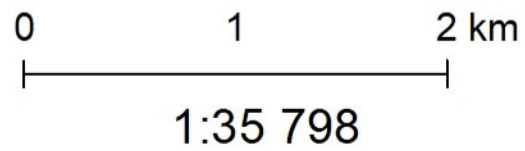
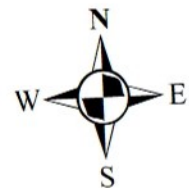
 Périmètre du site Natura 2000

Habitats dominants

-  hors Directive
-  intérêt régional
-  intérêt communautaire
-  intérêt prioritaire

Habitats secondaires en mosaïque













-  hors Directive
-  intérêt régional
-  intérêt communautaire
-  intérêt prioritaire

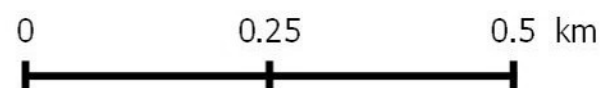
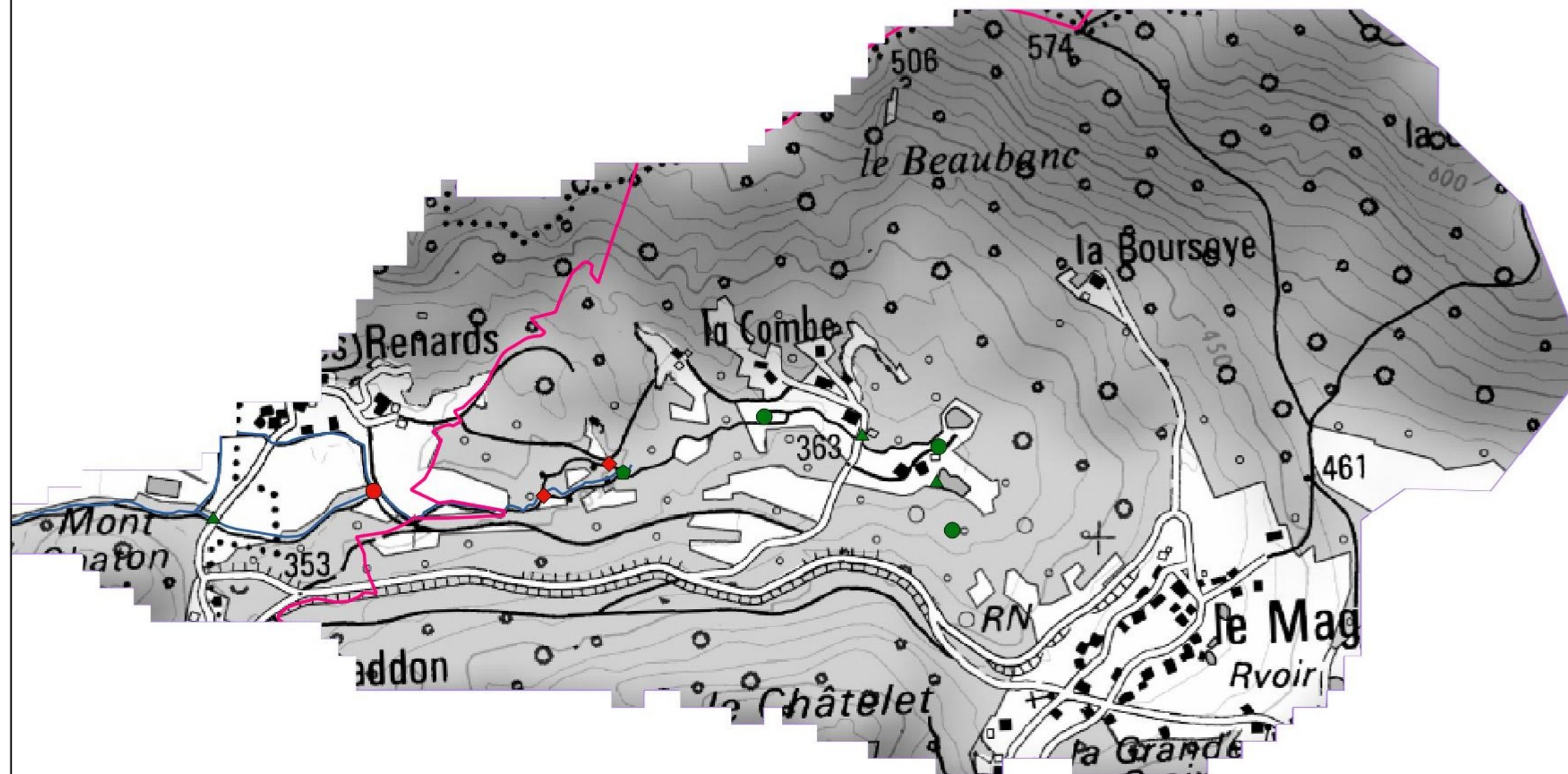




Diagnostic de la continuité écologique des bassins versants

Bassin versant du ruisseau des Renards, commune de Fresse









-  Périmètre site Natura 2000
-  Limites des bassins versants étudiés en 2016 et 2017
- Franchissabilité des ouvrages
 -  Franchissable
 -  Difficilement franchissable
 -  Infranchissable
 -  Partiellement franchissable
- Types d'ouvrages
 -  Entrées et sorties d'eau
 -  Buses
 -  Gués
 -  Ponts
 -  Seuils
 -  Piétements

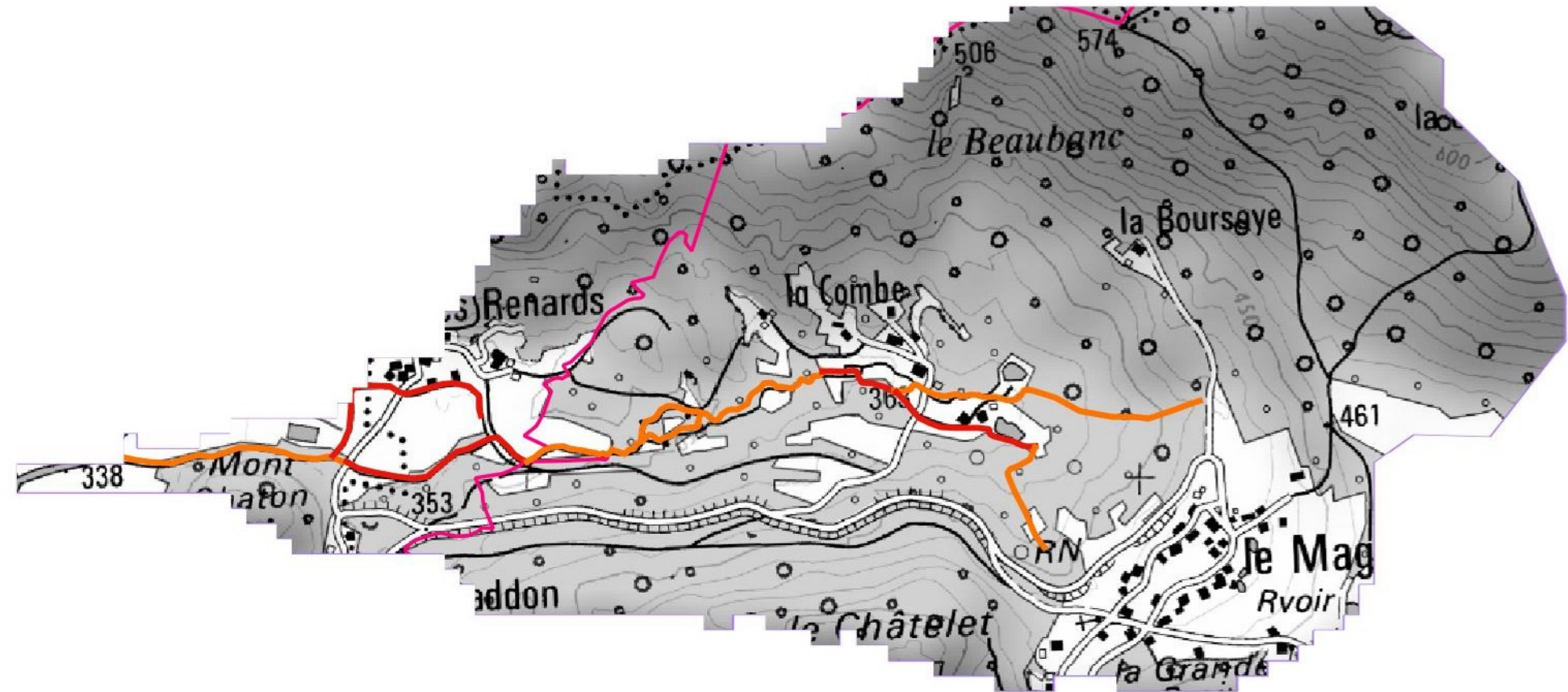
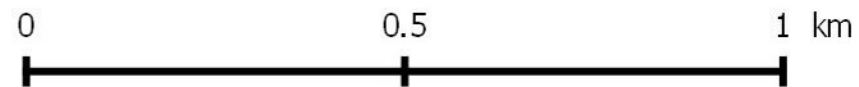




Diagnostic du fonctionnement hydromorphologique des cours d'eau de tête de bassins versants

Ruisseau des Renards, commune de Fresse

-  Périmètre site Natura 2000
-  Limites de bassins versants
- Fonctionnalité physique des cours d'eau
 -  Bonne
 -  Moyenne
 -  Mauvaise
 -  étang
 -  à sec
 -  Très mauvaise






Etat des connaissances sur les espèces Les données



Fresse

(pas de données connues sur l'empirise concernée par le site Natura 2000)

 Périmètre du site Natura 2000

Base de données PNRBV Serena

Données par type d'espèces

-  Données d'espèces d'intérêt communautaire (0)
-  Données d'autres espèces (0)



0 1,75 3,5 Km


1:35 565









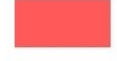





Répartition des atteintes principales sur les habitats d'intérêt communautaire connus

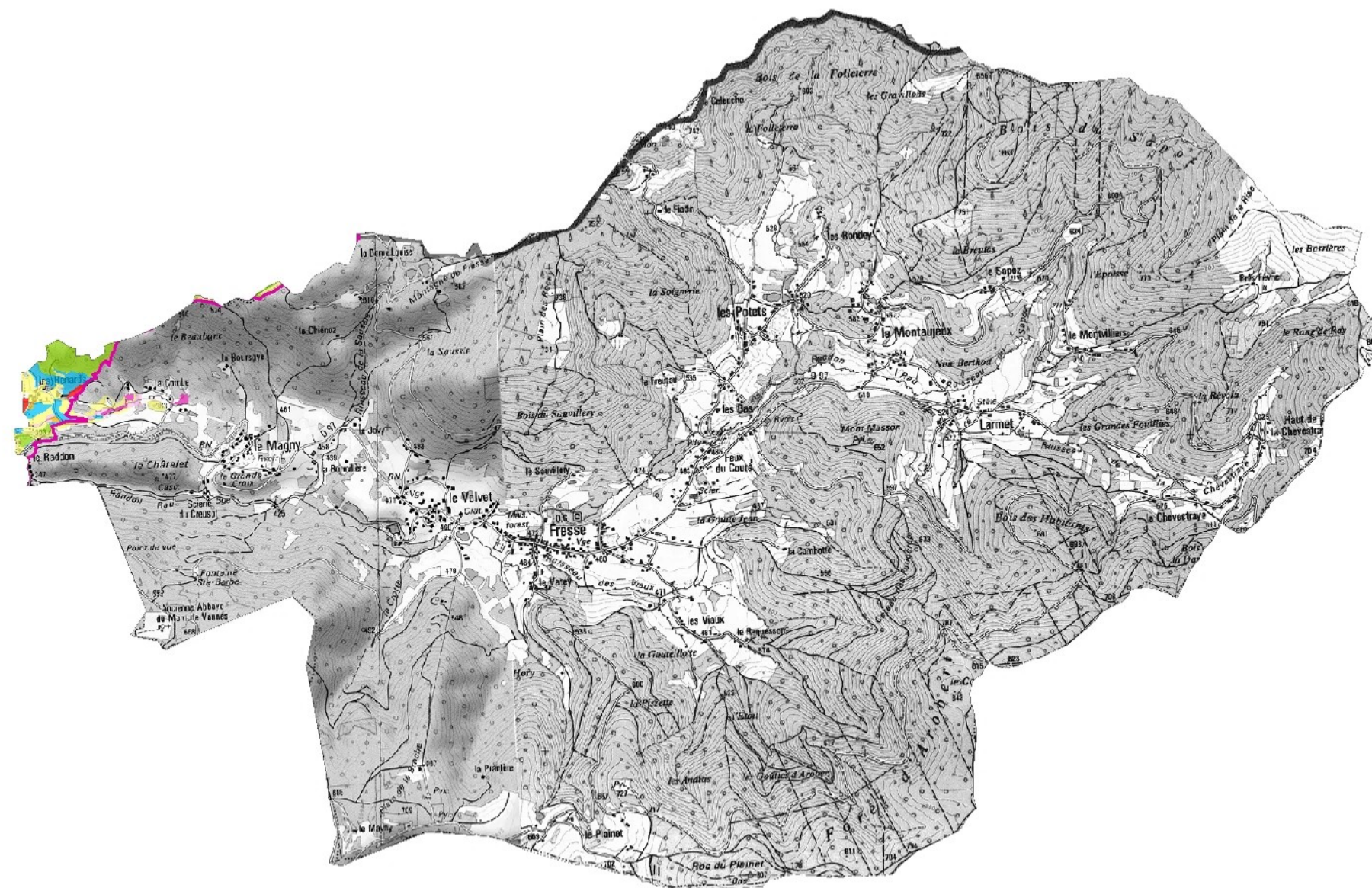
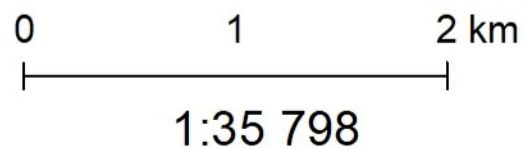
Commune de Fresse

 Périmètre du site Natura 2000

Les atteintes

des habitats principaux d'intérêt communautaire


-  non concerné (milieux naturels non ciblés par Natura 2000)
-  aucune
-  enrésinement
-  coupe, abattage
-  intensification
-  deprise
-  espèces exotiques
-  autres atteintes
-  inconnue
-  Non étudié







Secteurs et espèces sensibles connus au sein du site Natura 2000

Commune de Fresse

 Périmètre du site Natura 2000



Enjeux espèces

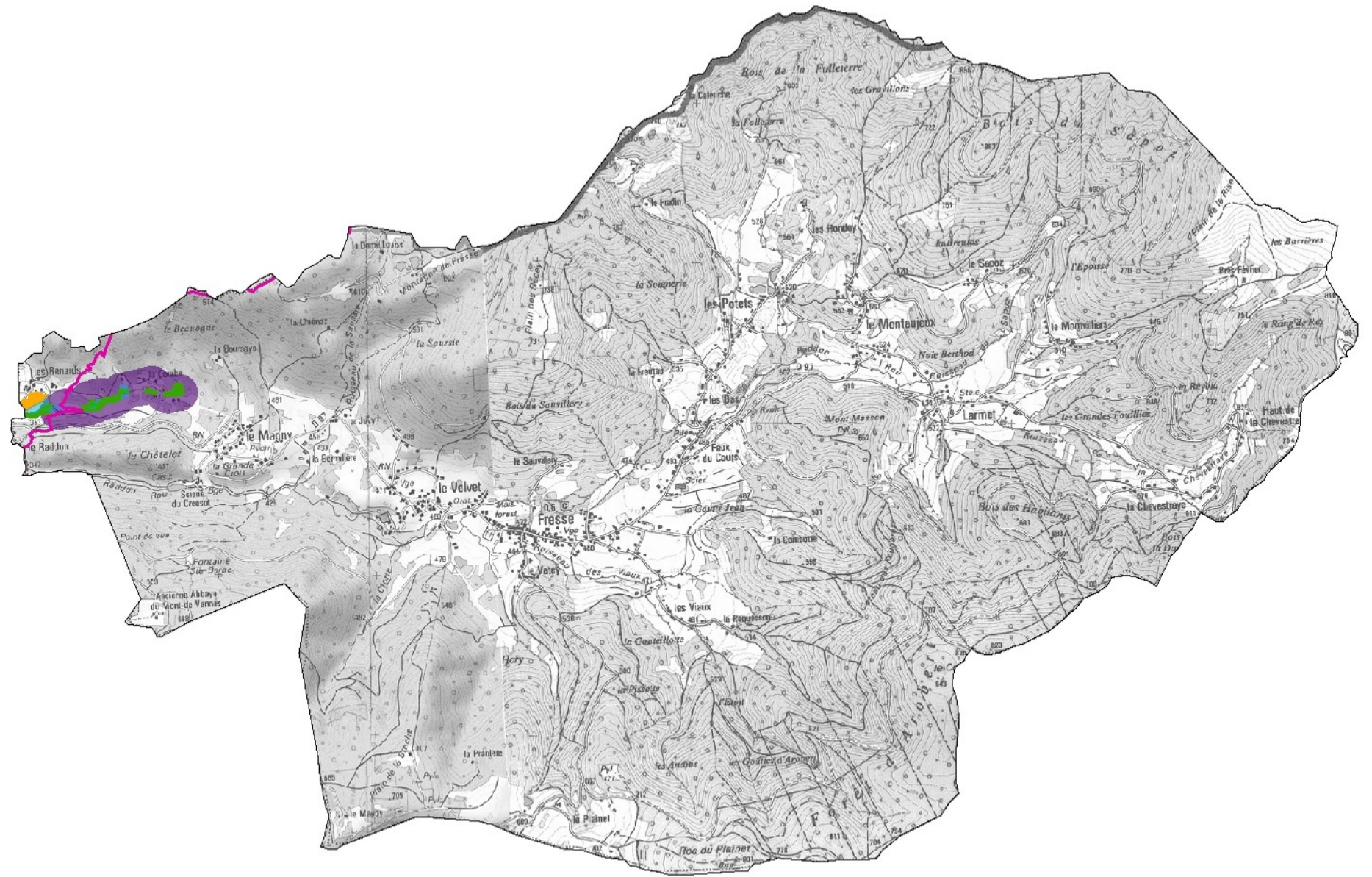
-  Enjeu de quiétude de la faune
-  Présence d'espèces rares ou menacées en Europe

Enjeux milieux naturels rares ou menacés ciblés par Natura 2000

-  Zones tourbeuses
-  Milieux humides
-  Forêts alluviales prioritaires
-  Milieux ouverts sensibles
-  Milieux rupestres

Milieux naturels réglementés par l'Etat

-  Prairies permanentes sensibles
-  Cours d'eau sensibles



0 2 4 Km