

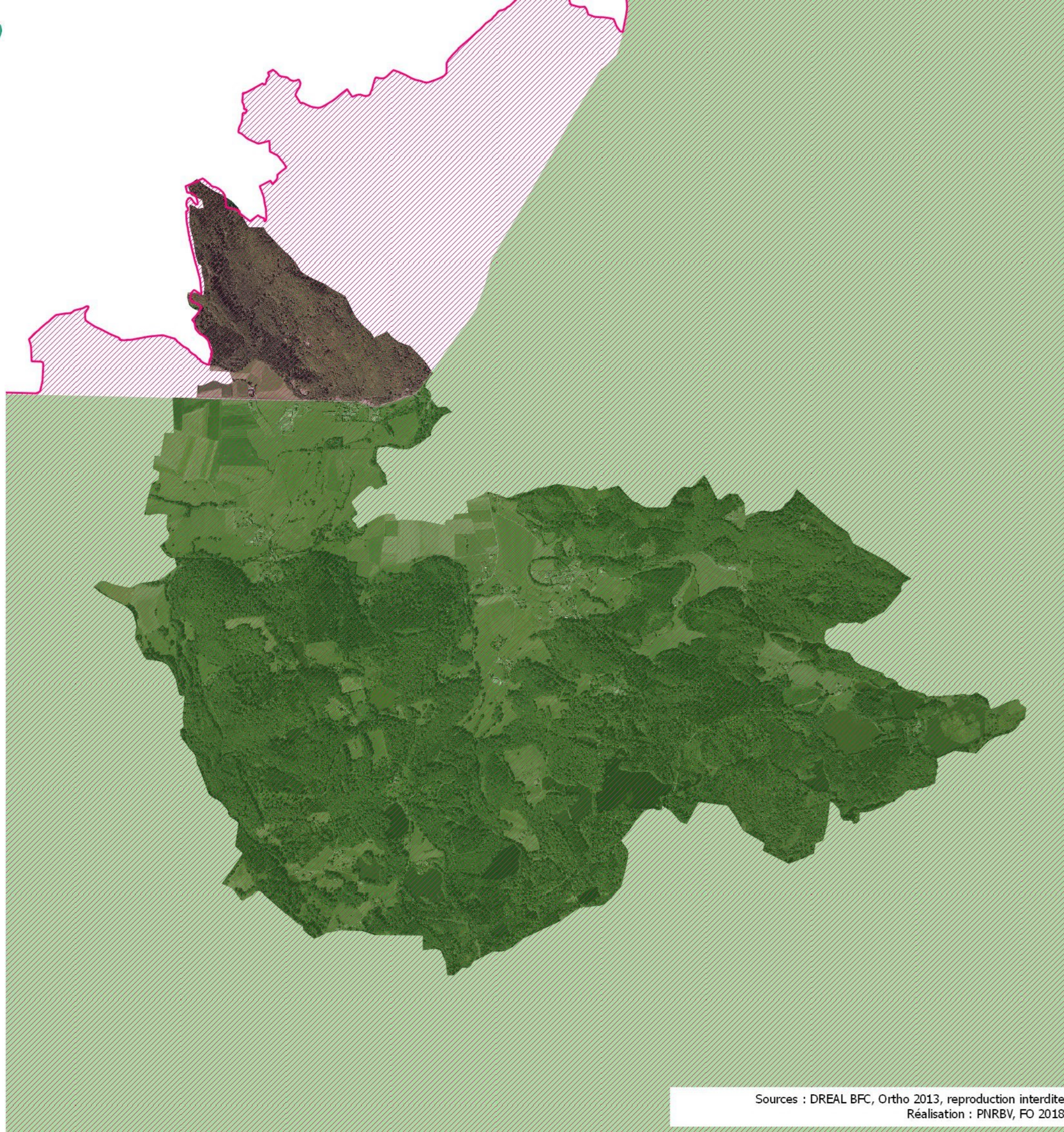
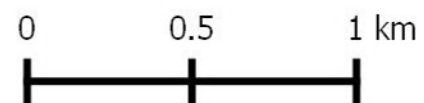




## Ajustement du périmètre du site Natura 2000

Commune de La Voivre  
(Commune concernée entièrement par le site Natura 2000)



-  Périmètre ajusté du site Natura 2000 (ZSC et ZPS)
-  Ancien périmètre Natura 2000

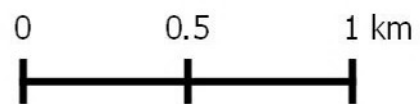
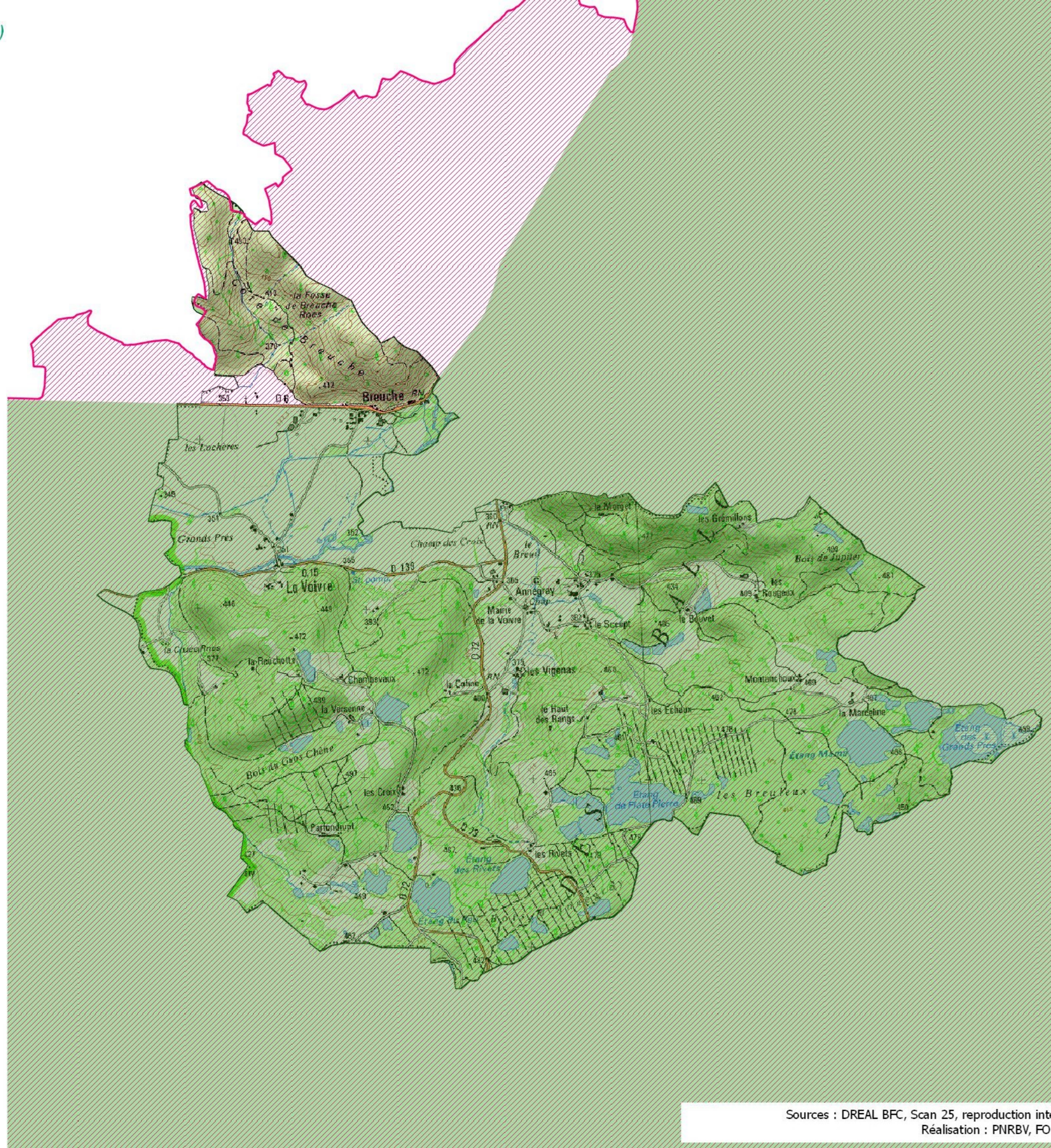




## Ajustement du périmètre du site Natura 2000

Commune de La Voivre  
(Commune concernée entièrement par le site Natura 2000)




-  Périmètre ajusté du site Natura 2000 (ZSC et ZPS)
-  Ancien périmètre Natura 2000









## Limites administratives

Commune de La Voivre

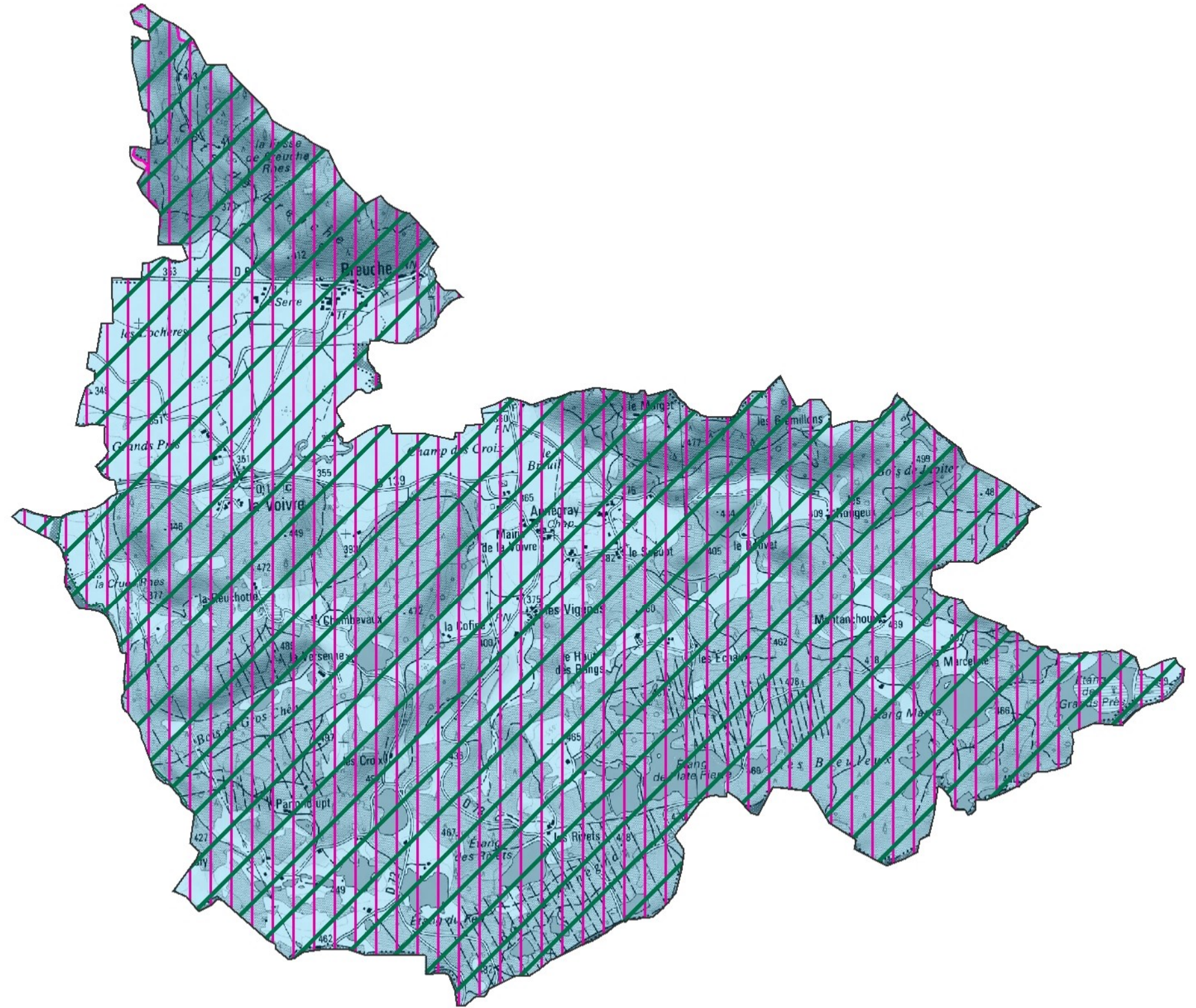
-  Limites communales
-  Parc naturel régional des Ballons des Vosges
-  Site Natura 2000

## Limites intercommunales

-  Communauté de Communes des Mille Etangs
-  Communauté de Communes du Pays de Lure
-  Communauté de Communes du Triangle Vert
-  Communauté de communes du Pays de Luxeuil



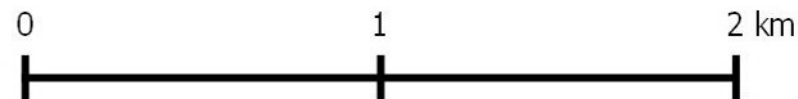
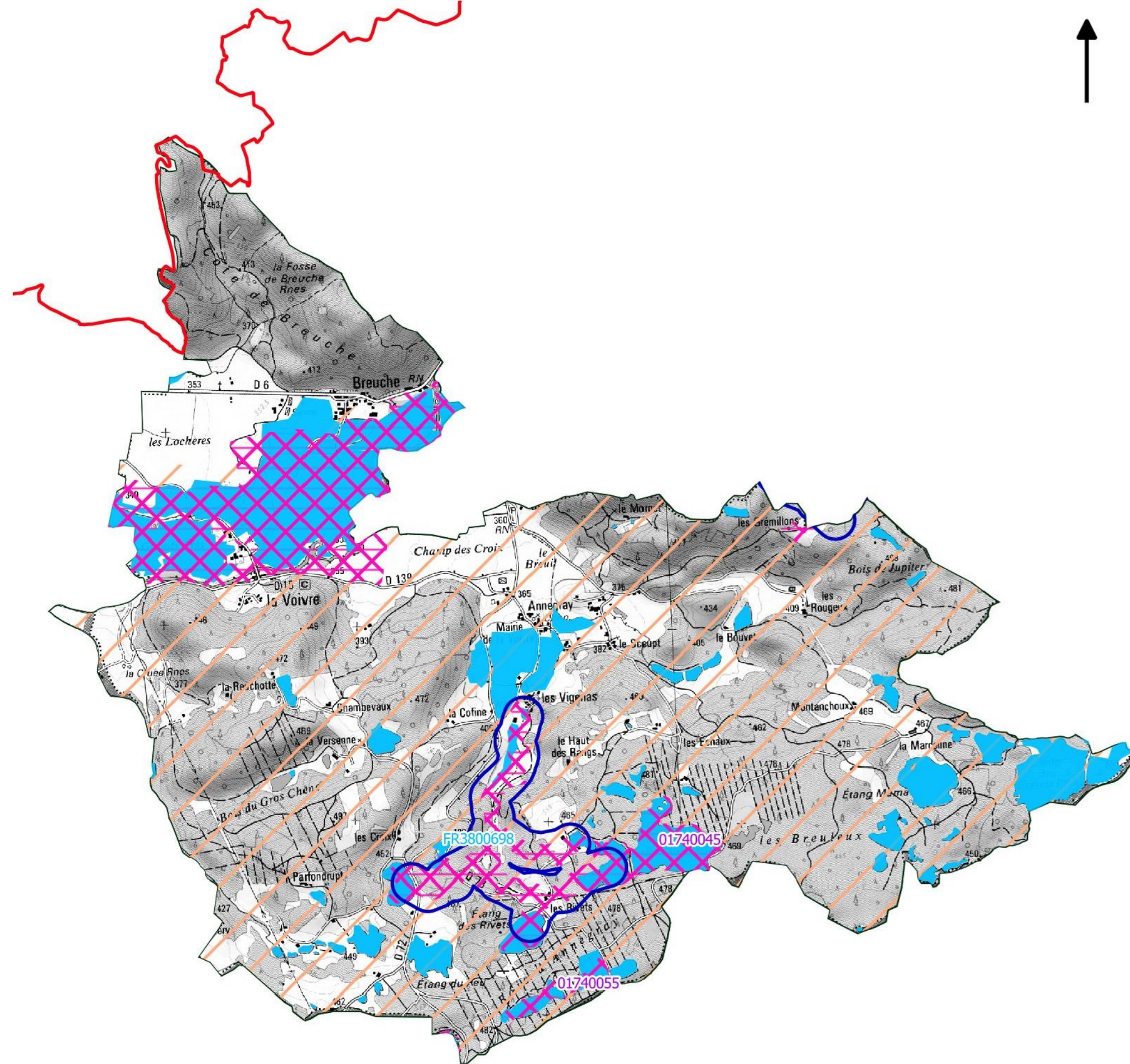
0 0,75 1,5 Km






## Zonages environnementaux

Commune de La Voivre






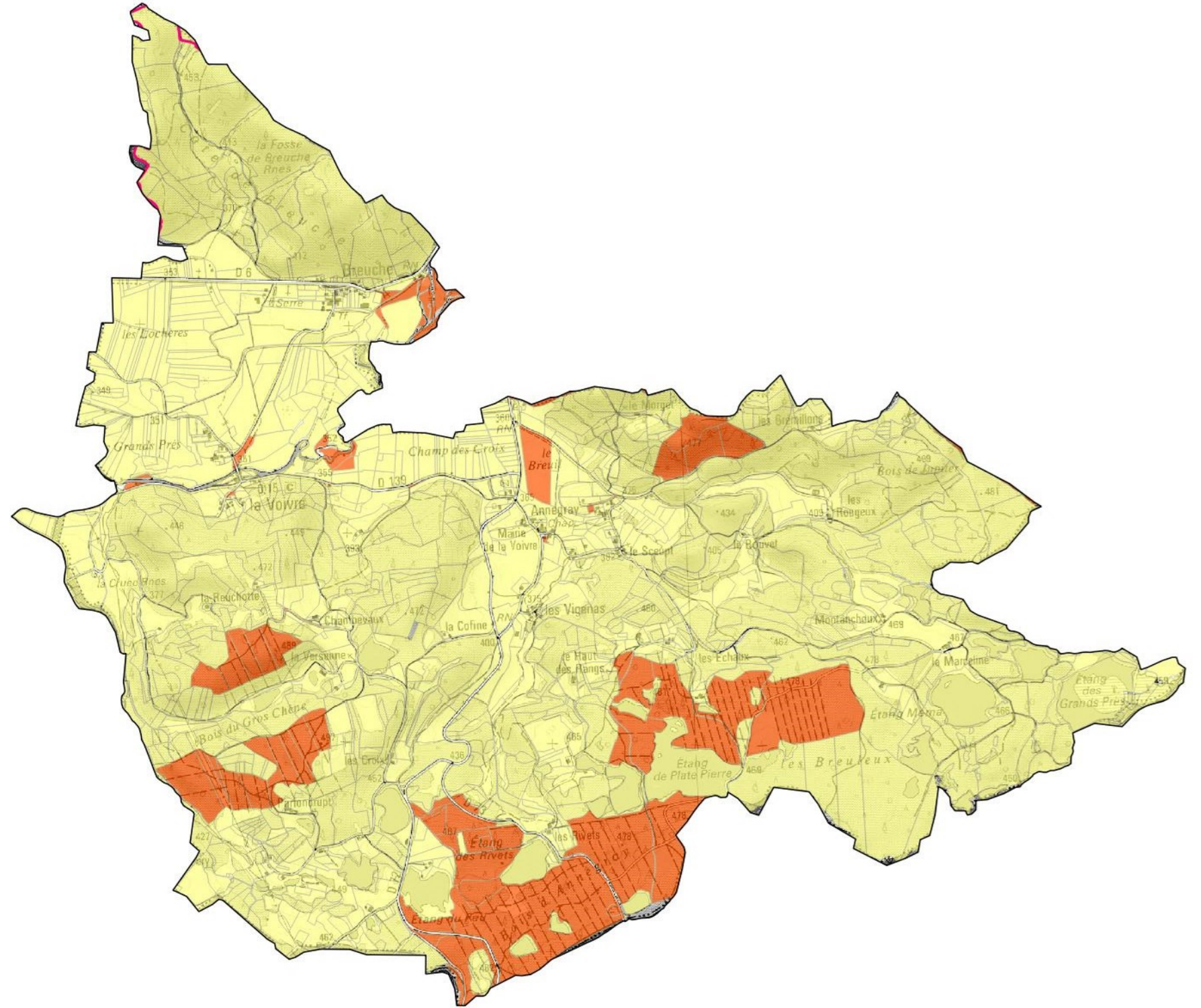
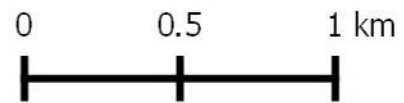


## Répartition foncière La Voivre

 Périmètre du site Natura 2000

Type de propriété

-  privée
-  communale et EPCI
-  domaine de l'Etat





## Bassin hydrographique et Réseau hydrologique

Commune de La Voivre

— Cours d'eau

■ Etangs

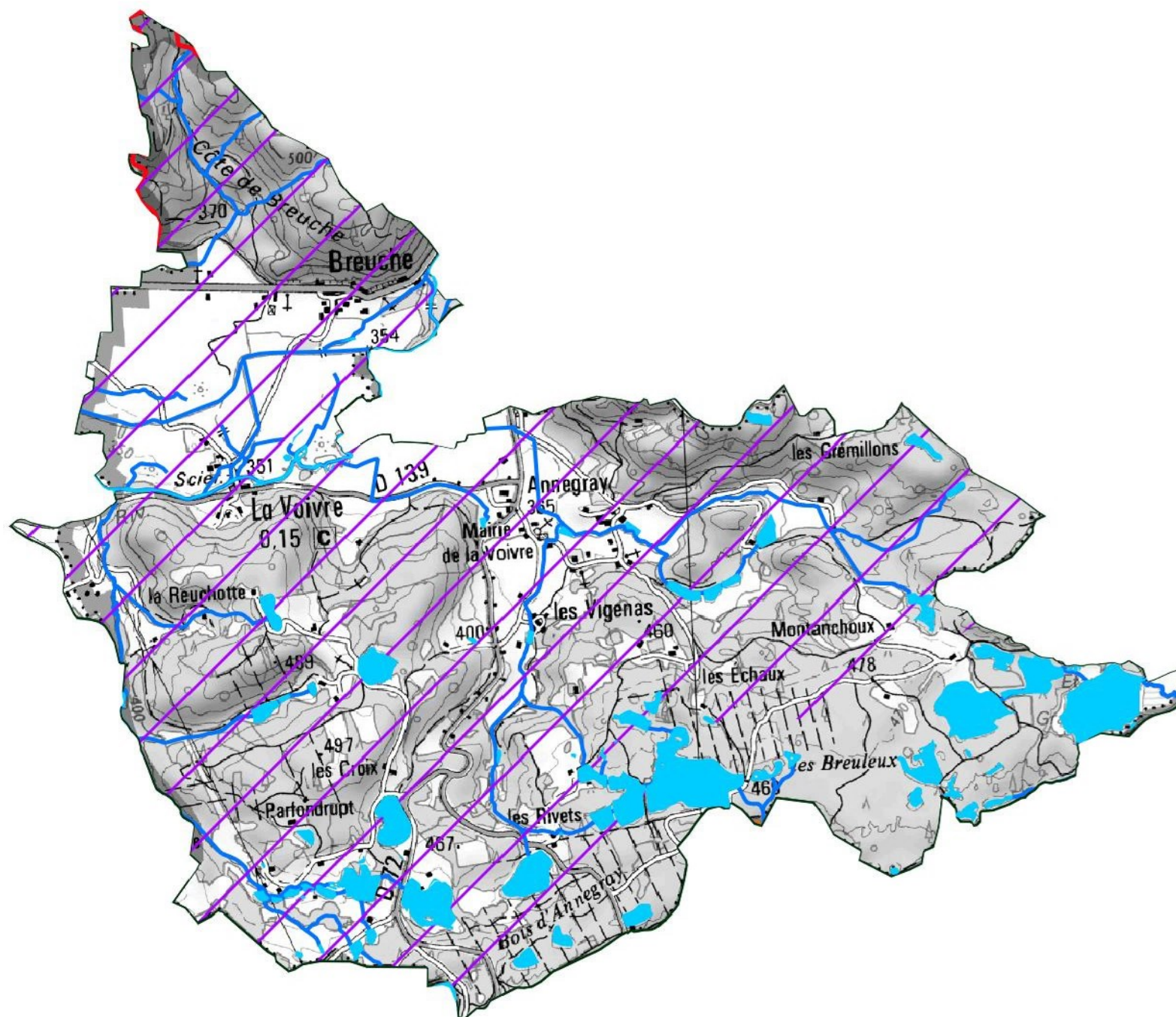
Limite de Bassins versants

— Lanterne

— Ognon



0 0.5 1 km





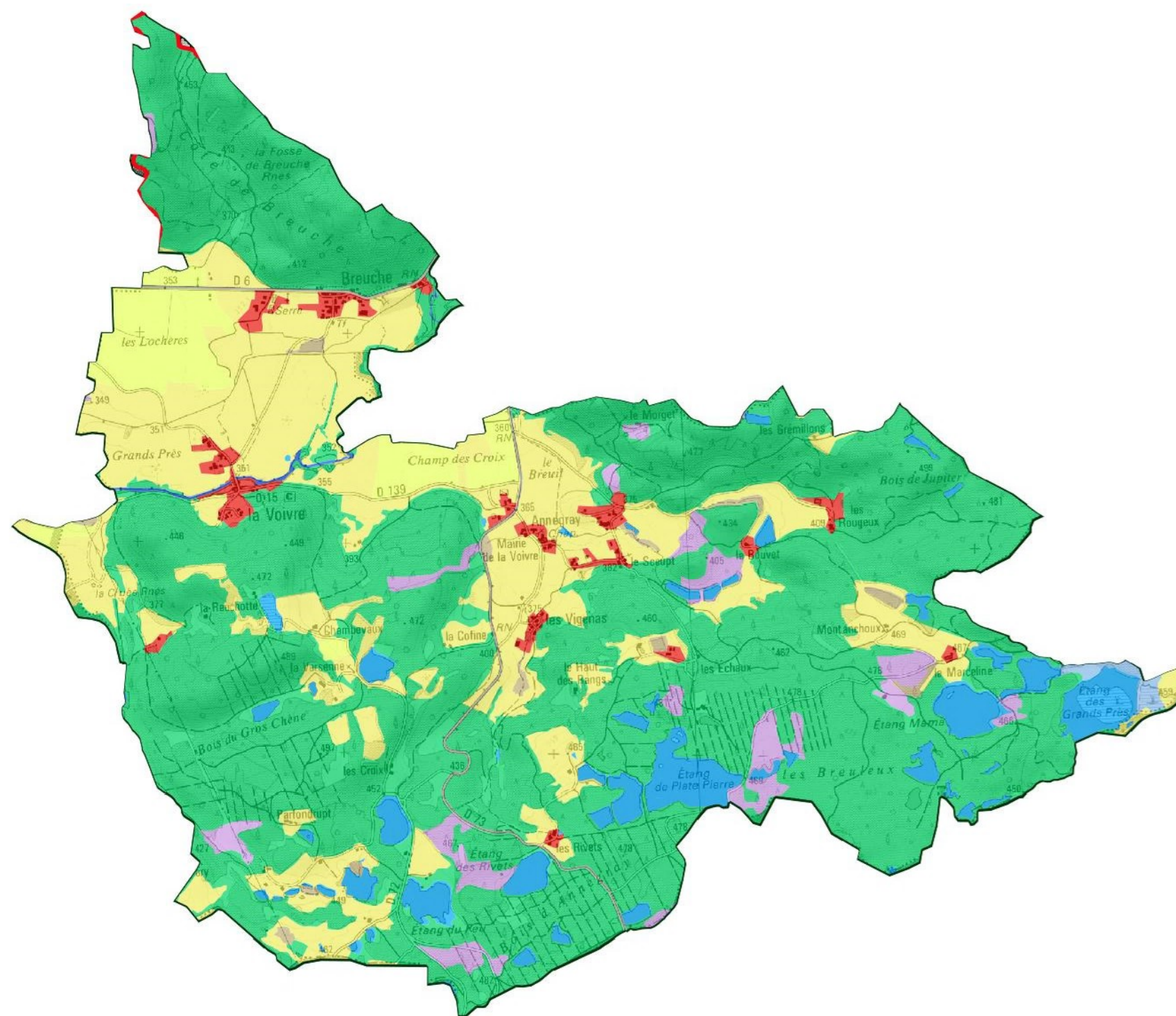
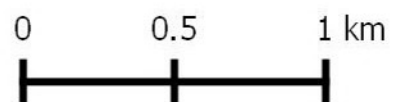
### Occupation du sol

#### La Voivre

Périmètre du site Natura 2000

Grands types d'occupation du sol

- Cultures
- Etangs
- Forêts
- Haies
- Infrastructures
- Landes
- Milieux rupestres
- Prairies
- Rivières
- Sols nus
- Zones humides
- Zones urbanisées






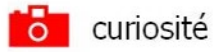




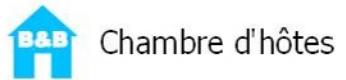
## Activités touristiques La Voivre

 Périmètre du site Natura 2000

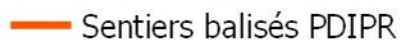
Points touristiques



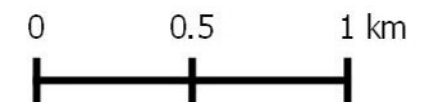
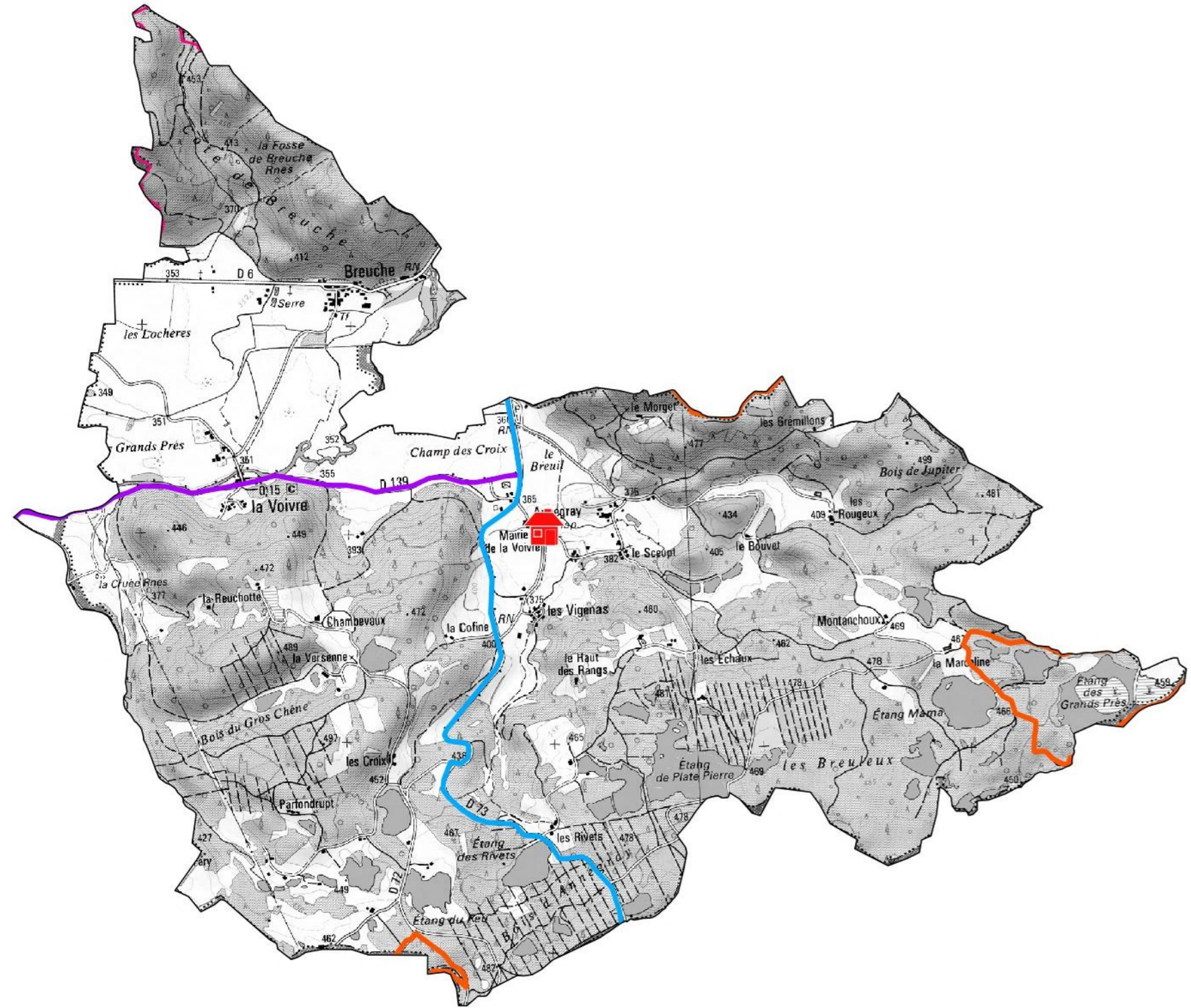
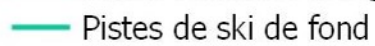
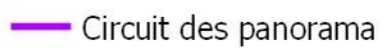
Hébergements



Randonnée pedestre




Routes touristiques





## Etat des connaissances sur les habitats naturels

### La Voivre

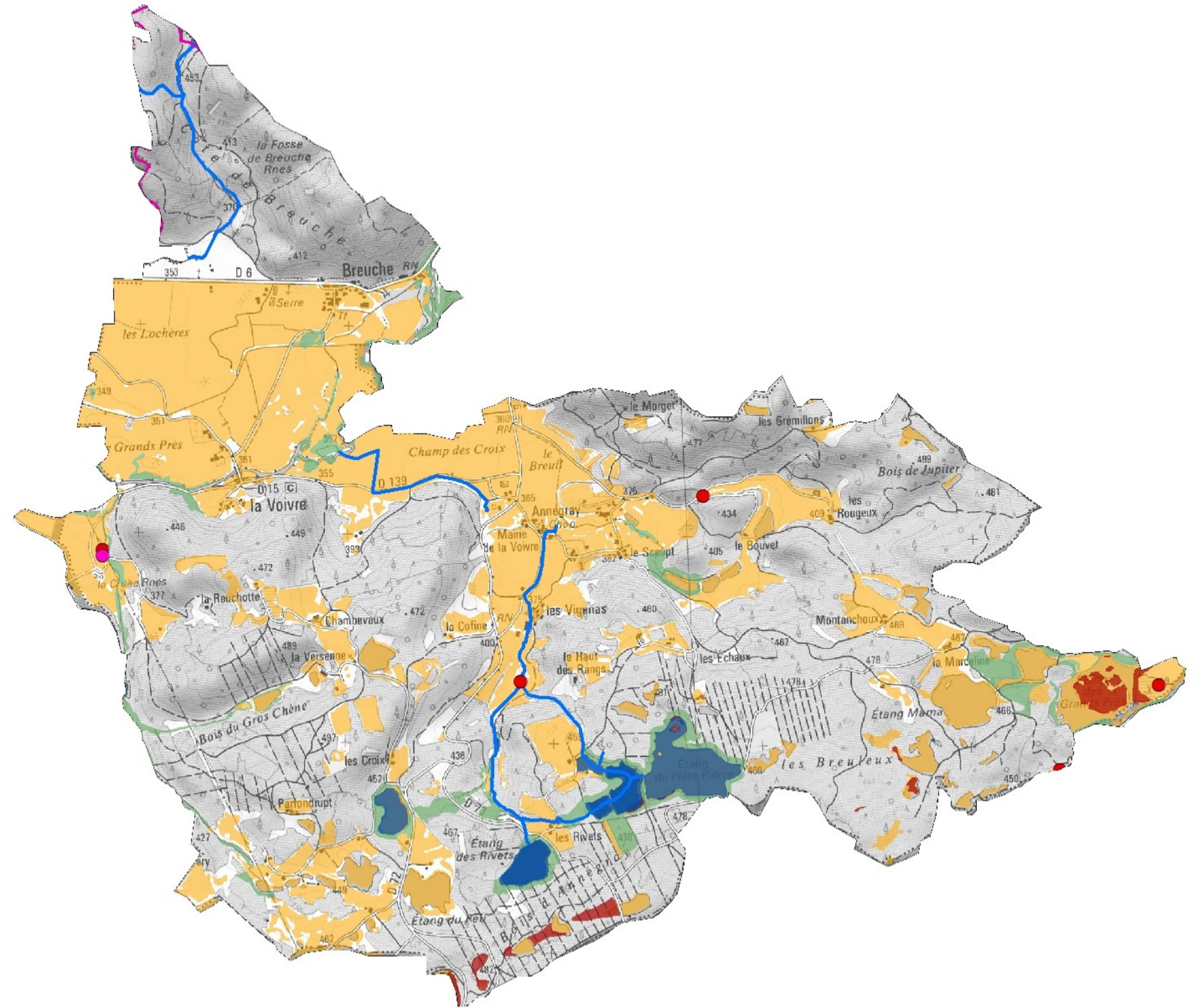
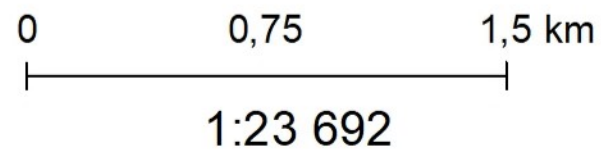
 Périmètre du site Natura 2000

### Cartographies des habitats naturels

-  Inventaires des tourbières (CENFC 96, 2017-2018)
-  Etude et cartographie des milieux ouverts (ECOSCOPE 2008)
-  Etude et cartographie des milieux forestiers (Climax 2013,2014, Biotpe 2015,2016)

### Etudes sur les milieux aquatiques

-  Analyse de la qualité physique des cours d'eau (PNRBV 2016, Teleos 2017)
-  Etudes sur les étangs (EPTB 2007, PNRBV 2016, HTV 2017)
-  Analyses biologiques (IBGN Sialis 2014, Mag20 Teleos 2017)
-  Analyses thermiques (PNRBV 2012-2017)





## Etat des connaissances sur les espèces Les études et suivis menés

### La Voivre

Prospections amphibiens sur l'ensemble du site (BE Craney, 2009)

● Sites de prospections chiroptères (CPEPESC 2011)

● Etude Oiseaux (BCD, 2012)

● Pêches électriques (PNRBV, ONEMA, 2012, Fédération pêche 70, 2018)

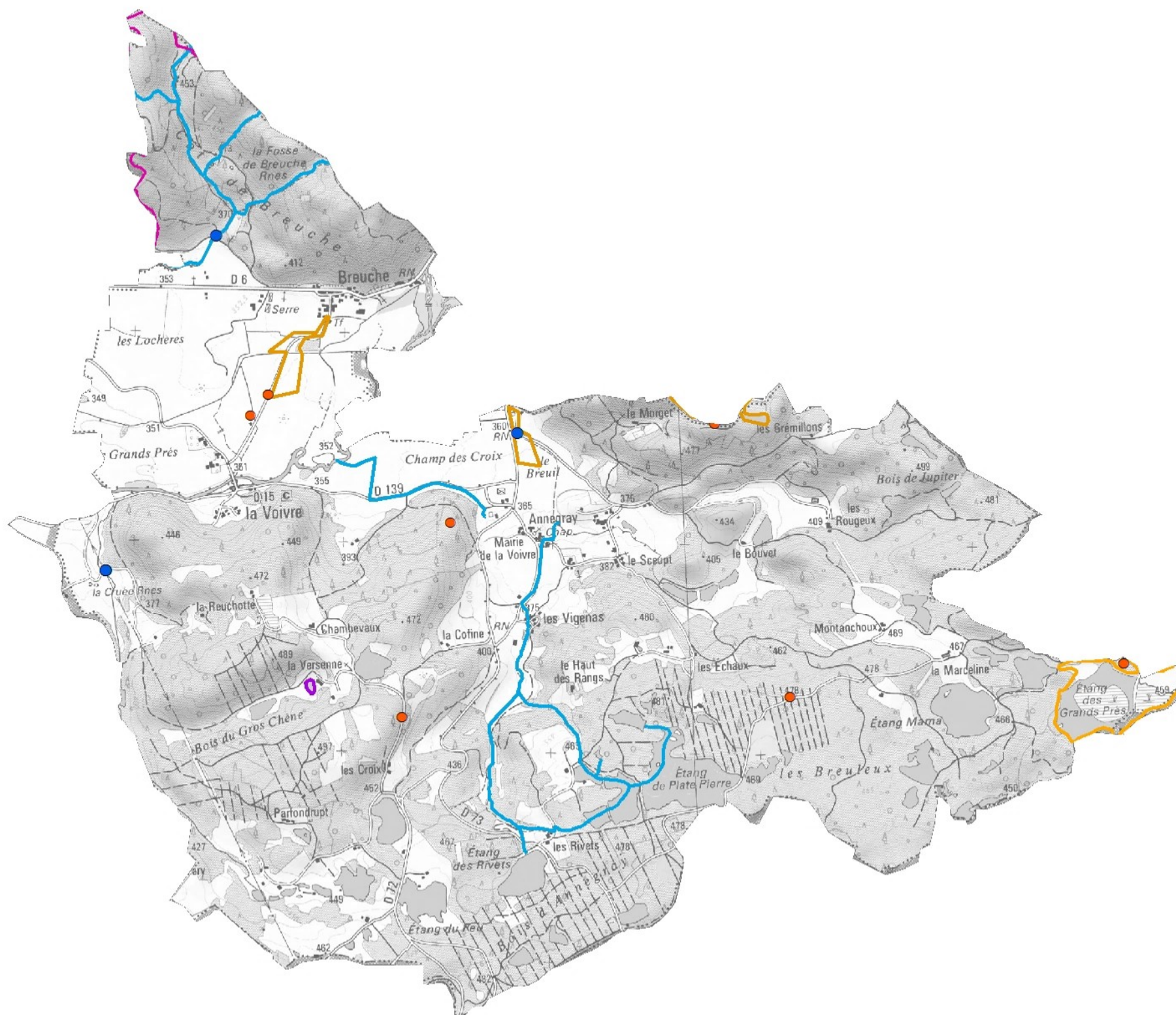
— Prospections écrevisses (PNRBV-Fédération pêche 70 2016-2017)

▭ Prospections entomologiques (CBNFC, 2016)

▭ Prospections espèces PRA (CBNFC)




1:23 559




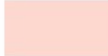




**Classification des habitats naturels  
d'après la Directive Natura 2000 "Habitats, Faune, Flore"**

La Voivre

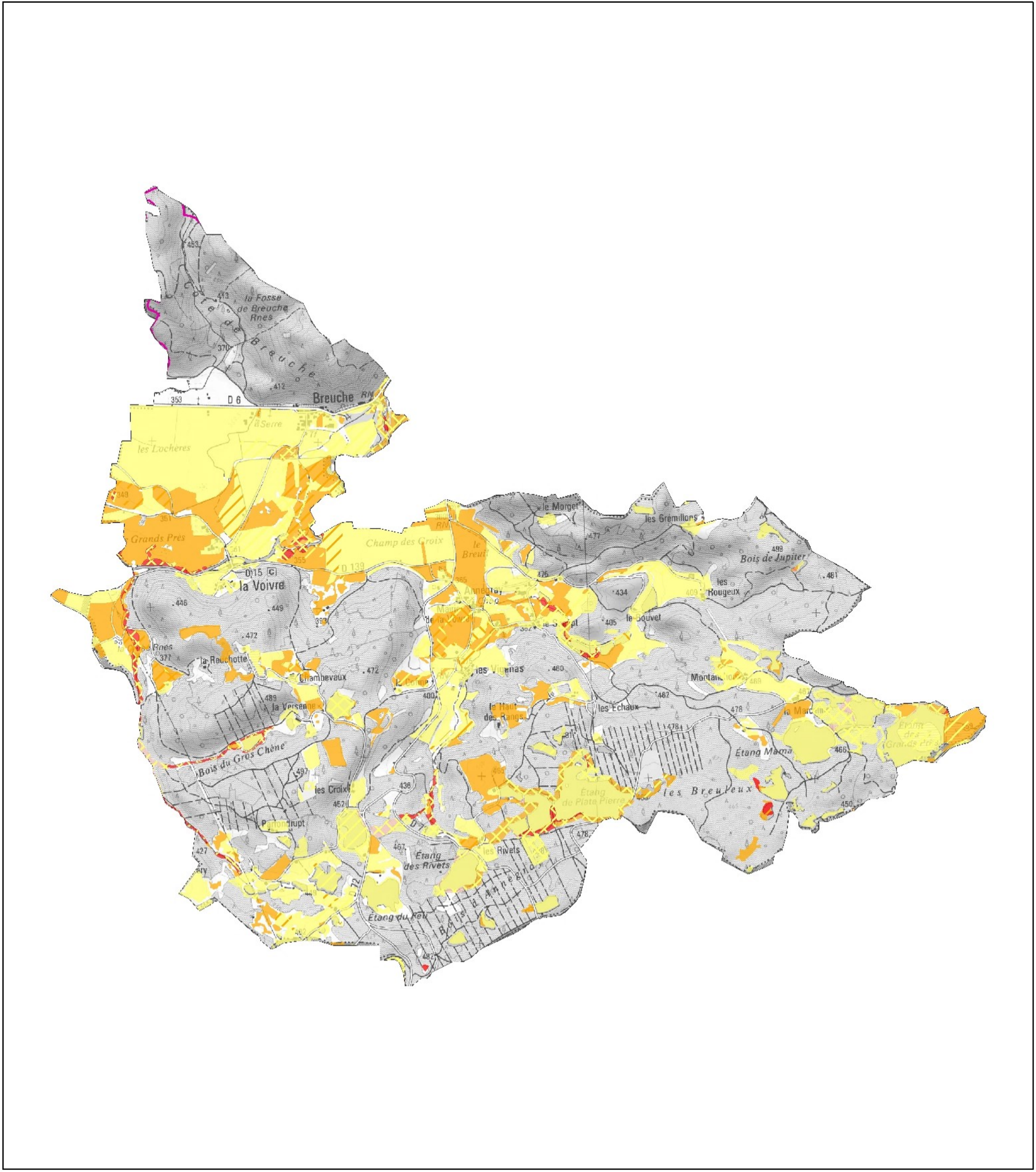
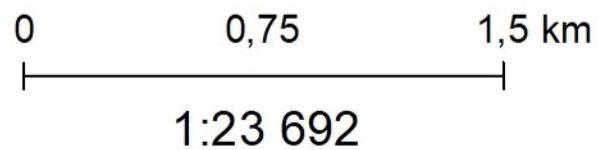
 Périmètre du site Natura 2000

**Habitats dominants**

-  hors Directive
-  intérêt régional
-  intérêt communautaire
-  intérêt prioritaire

**Habitats secondaires en mosaïque**

-  hors Directive
-  intérêt régional
-  intérêt communautaire
-  intérêt prioritaire





## Diagnostic de la continuité écologique des bassins versants

Bassin versant du ruisseau de la Bassole,  
commune de La Voivre

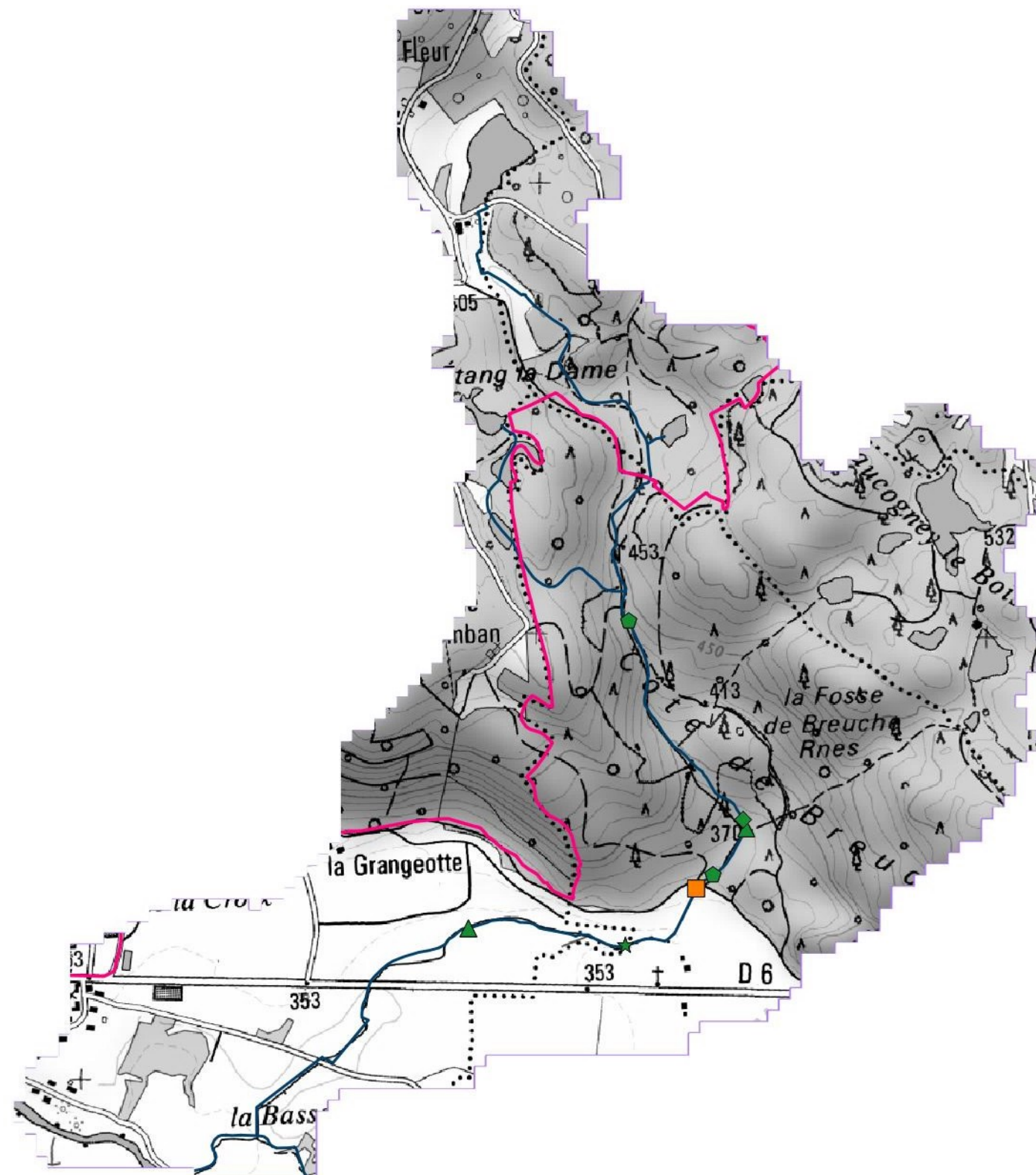
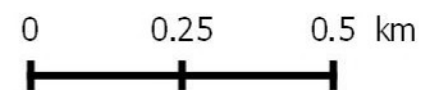
Périmètre site Natura 2000

Franchissabilité des ouvrages

- Franchissable
- Difficilement franchissable
- Infranchissable
- Partiellement franchissable

Types d'ouvrages


- Entrées et sorties d'eau
- Buses
- Gués
- Ponts
- Seuils
- Piétinements






## Diagnostic de la continuité écologique des bassins versants






Bassin versant du ruisseau des Rivets, commune de La Voivre

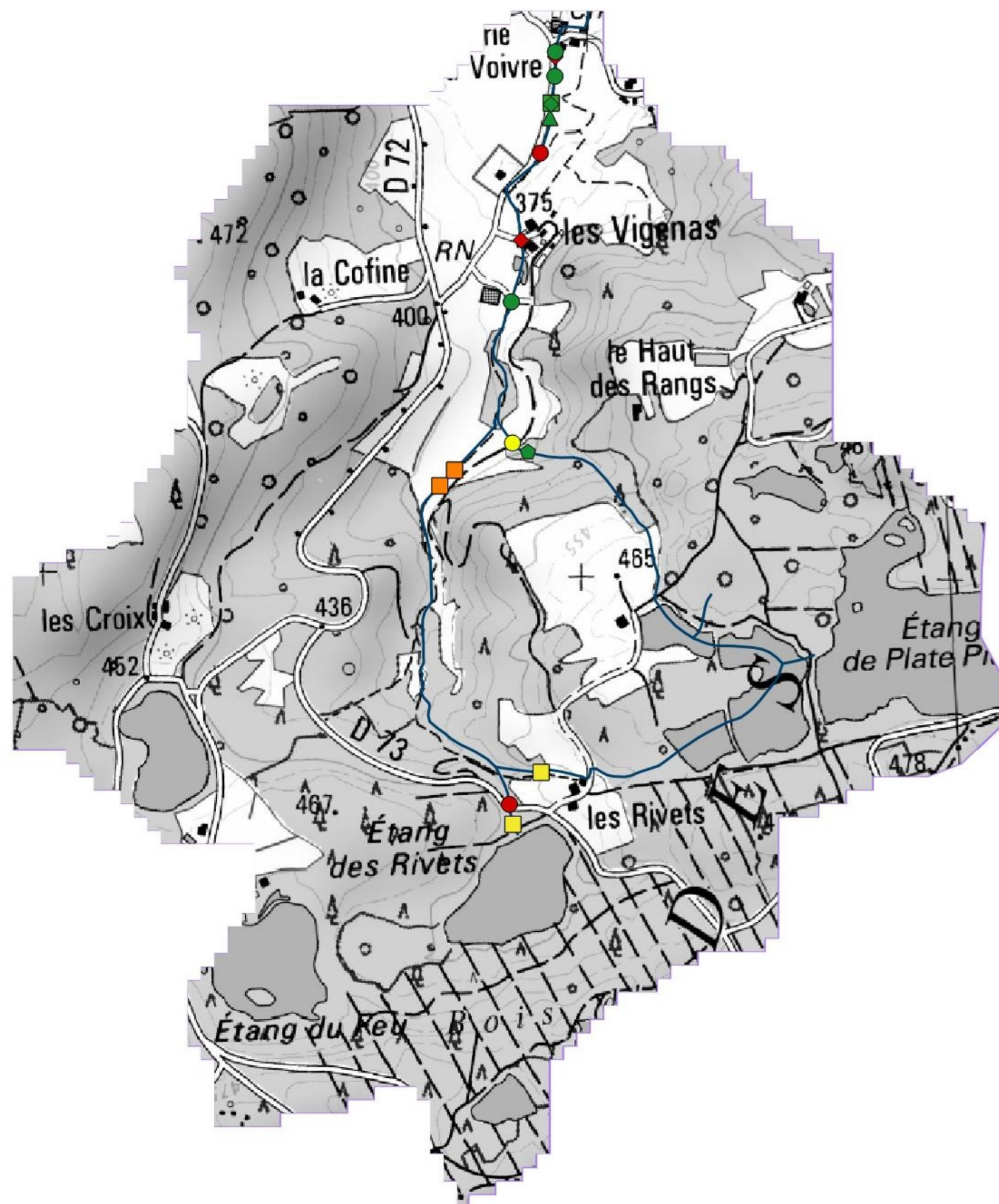
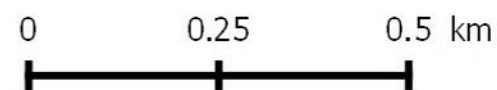
 Périmètre site Natura 2000

Franchissabilité des ouvrages

-  Franchissable
-  Difficilement franchissable
-  Infranchissable
-  Partiellement franchissable

### Types d'ouvrages









-  Entrées et sorties d'eau
-  Buses
-  Gués
-  Ponts
-  Seuils
-  Piétinements





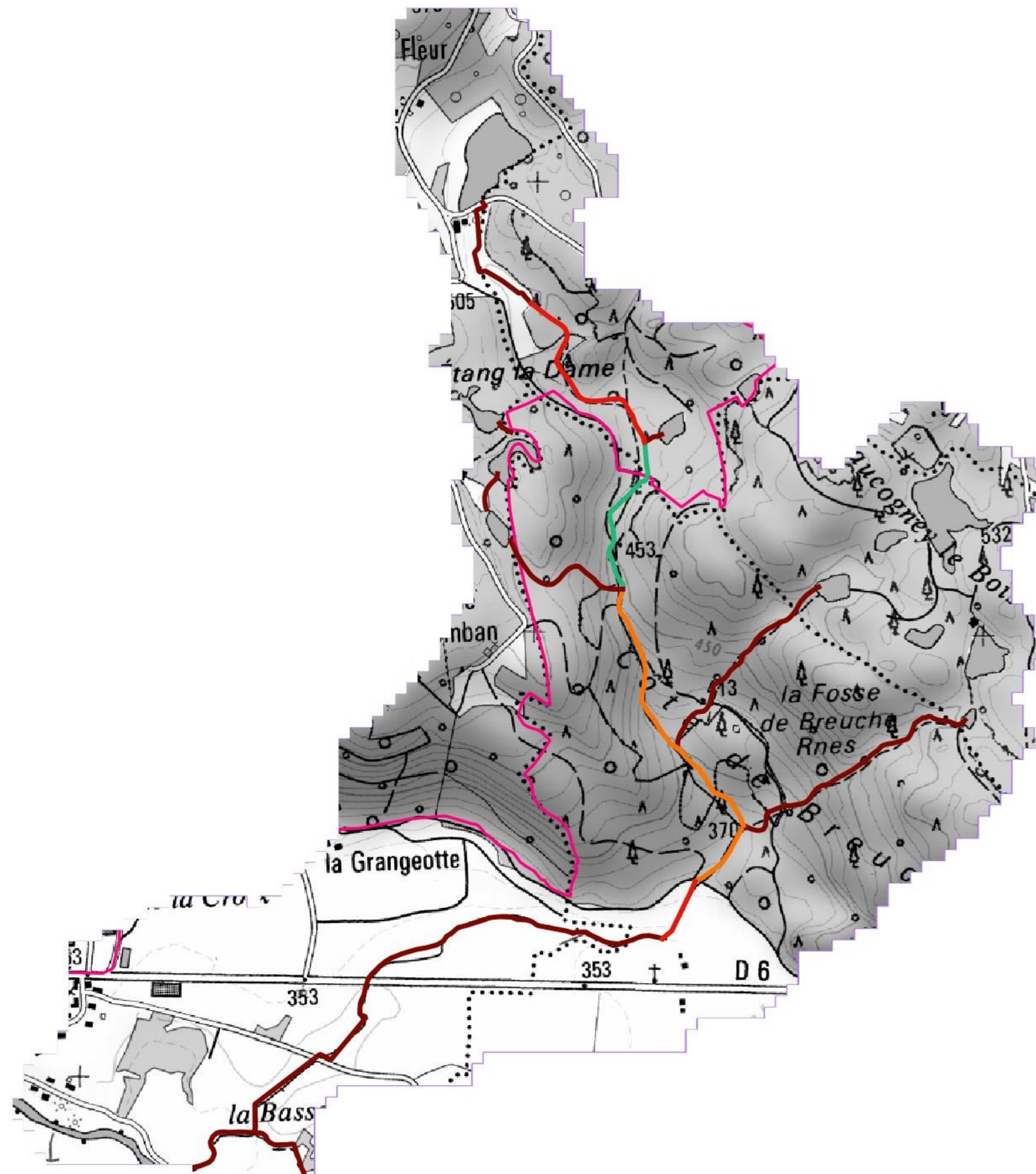

## Diagnostic du fonctionnement hydromorphologique des cours d'eau de tête de bassins versants

Ruisseau de La Bassole, commune de La Voivre et Sainte-Marie-en-Chanois

-  Périmètre site Natura 2000
-  Limites de bassins versants
- Fonctionnalité physique des cours d'eau
  -  Bonne
  -  Moyenne
  -  Mauvaise
  -  étang
  -  à sec
  -  Très mauvaise











0 0.25 0.5 km





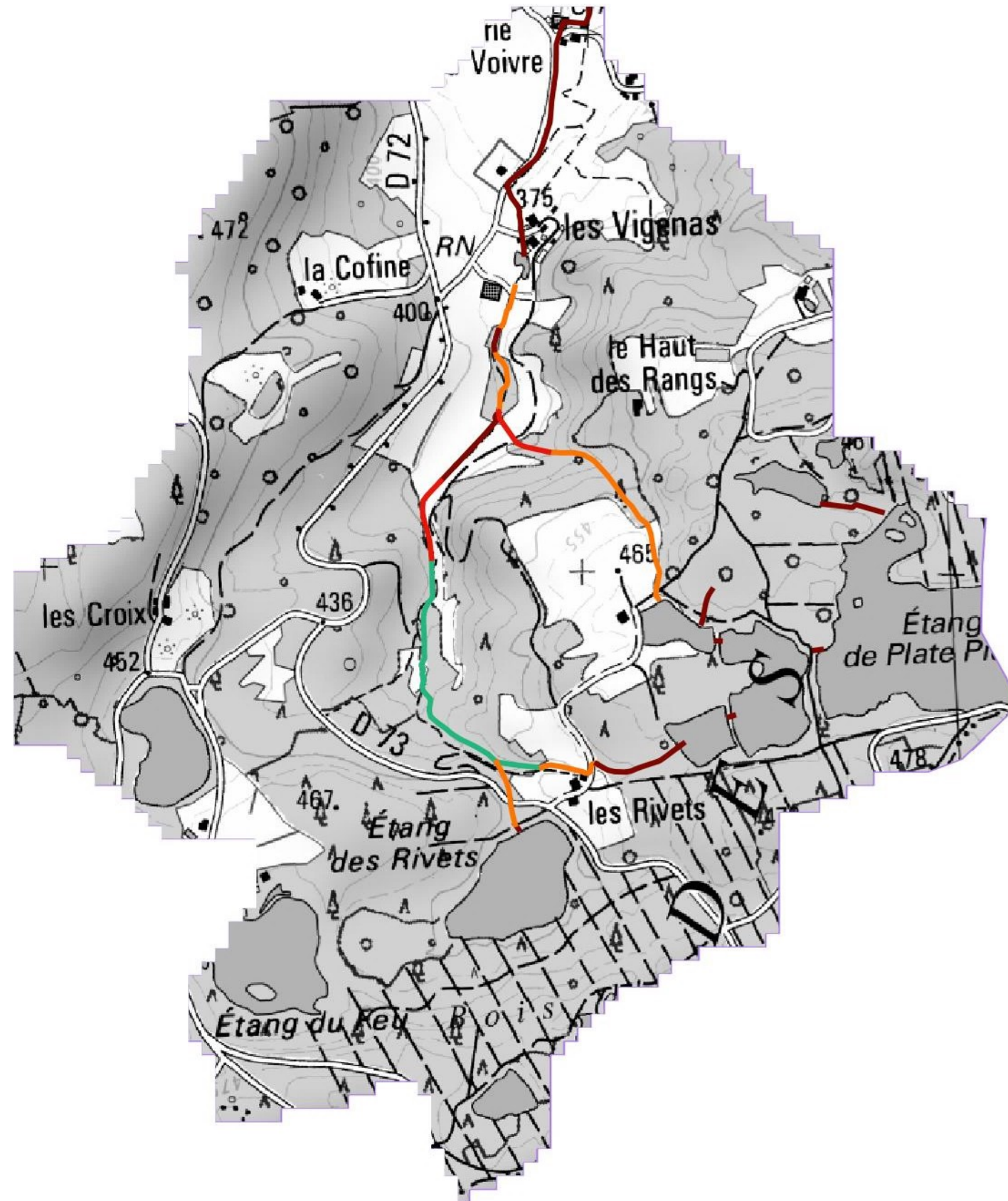
## Diagnostic du fonctionnement hydromorphologique des cours d'eau de tête de bassins versants

Ruisseau des Rivets, commune de La Voivre

-  Périmètre site Natura 2000
-  Limites de bassins versants
- Fonctionnalité physique des cours d'eau
  -  Bonne
  -  Moyenne
  -  Mauvaise
  -  étang
  -  à sec
  -  Très mauvaise



0 0.5 1 km















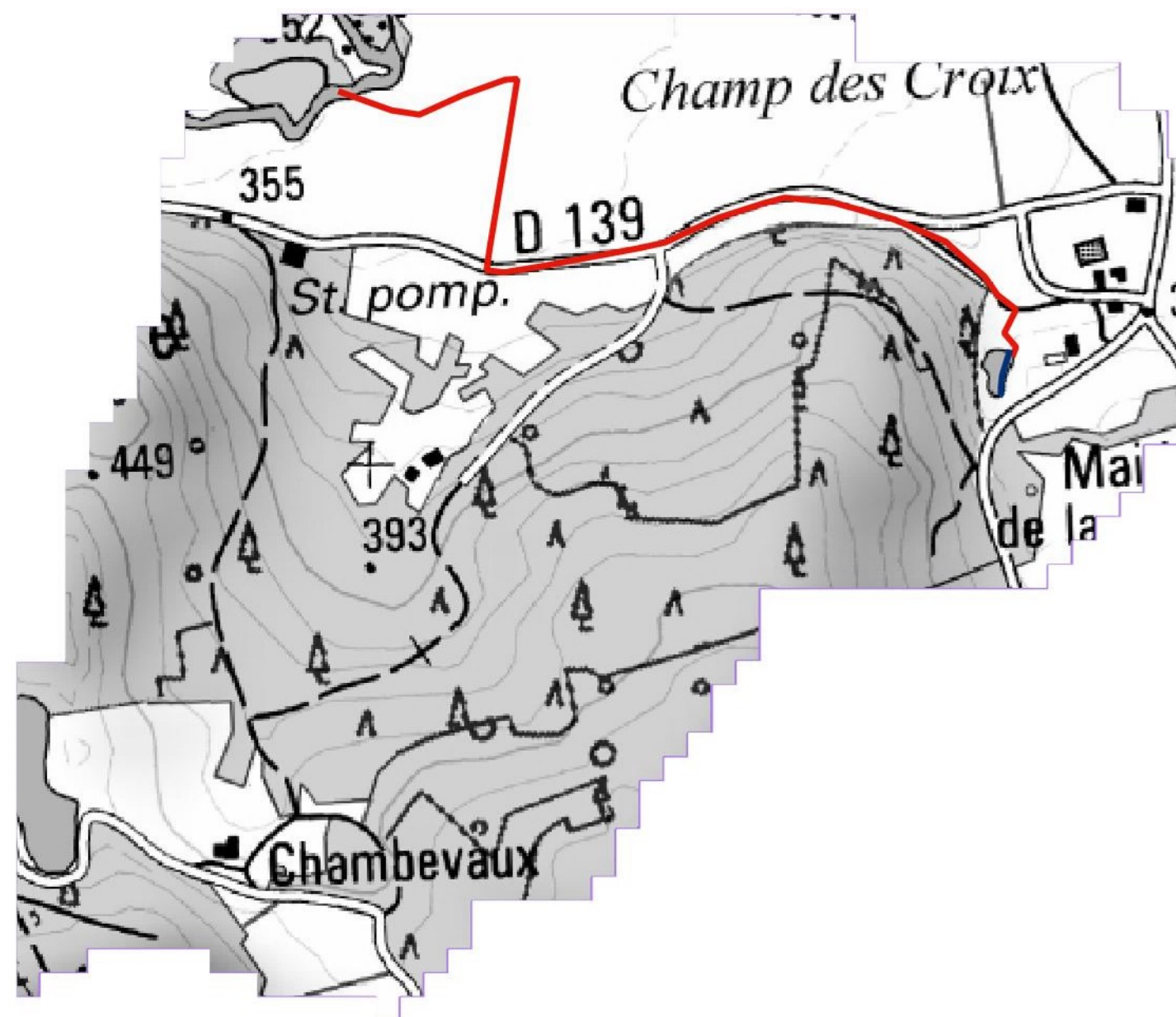
## Diagnostic du fonctionnement hydromorphologique des cours d'eau de tête de bassins versants

*Ruisseau sous les Rivets, commune de La Voivre*

-  Périmètre site Natura 2000
-  Limites de bassins versants
- Fonctionnalité physique des cours d'eau
  -  Bonne
  -  Moyenne
  -  Mauvaise
  -  étang
  -  à sec
  -  Très mauvaise




0 0.25 0.5 km







## Etat des connaissances sur les espèces Les données

La Voivre

 Périmètre du site Natura 2000

Base de données PNRBV Serena

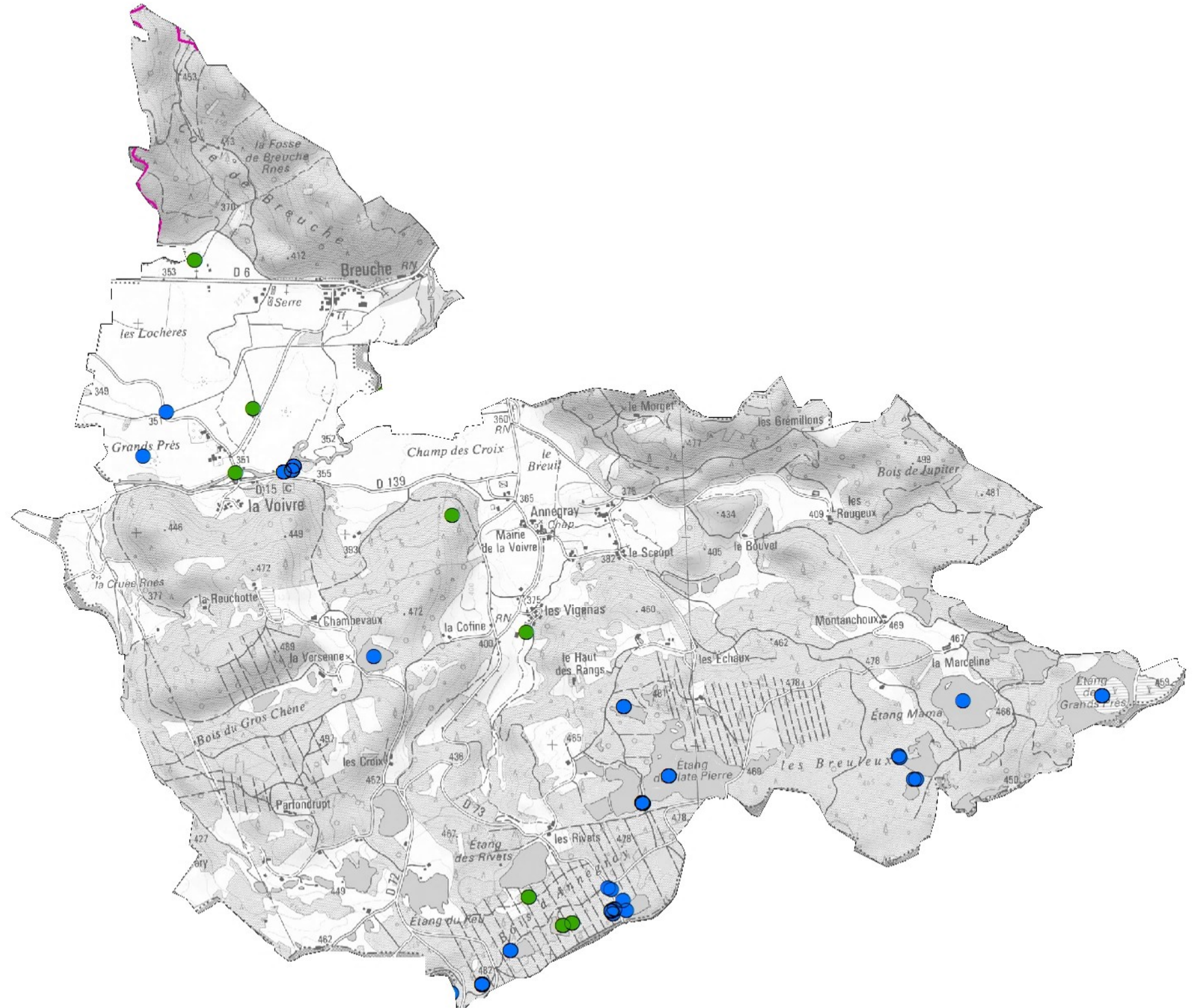
Données par type d'espèces

-  Données d'espèces d'intérêt communautaire (9)
-  Données d'autres espèces (189)



0 1,25 2,5 Km


1:23 539









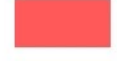





## Répartition des atteintes principales sur les habitats d'intérêt communautaire connus

Commune de La Voivre

 Périmètre du site Natura 2000

### Les atteintes

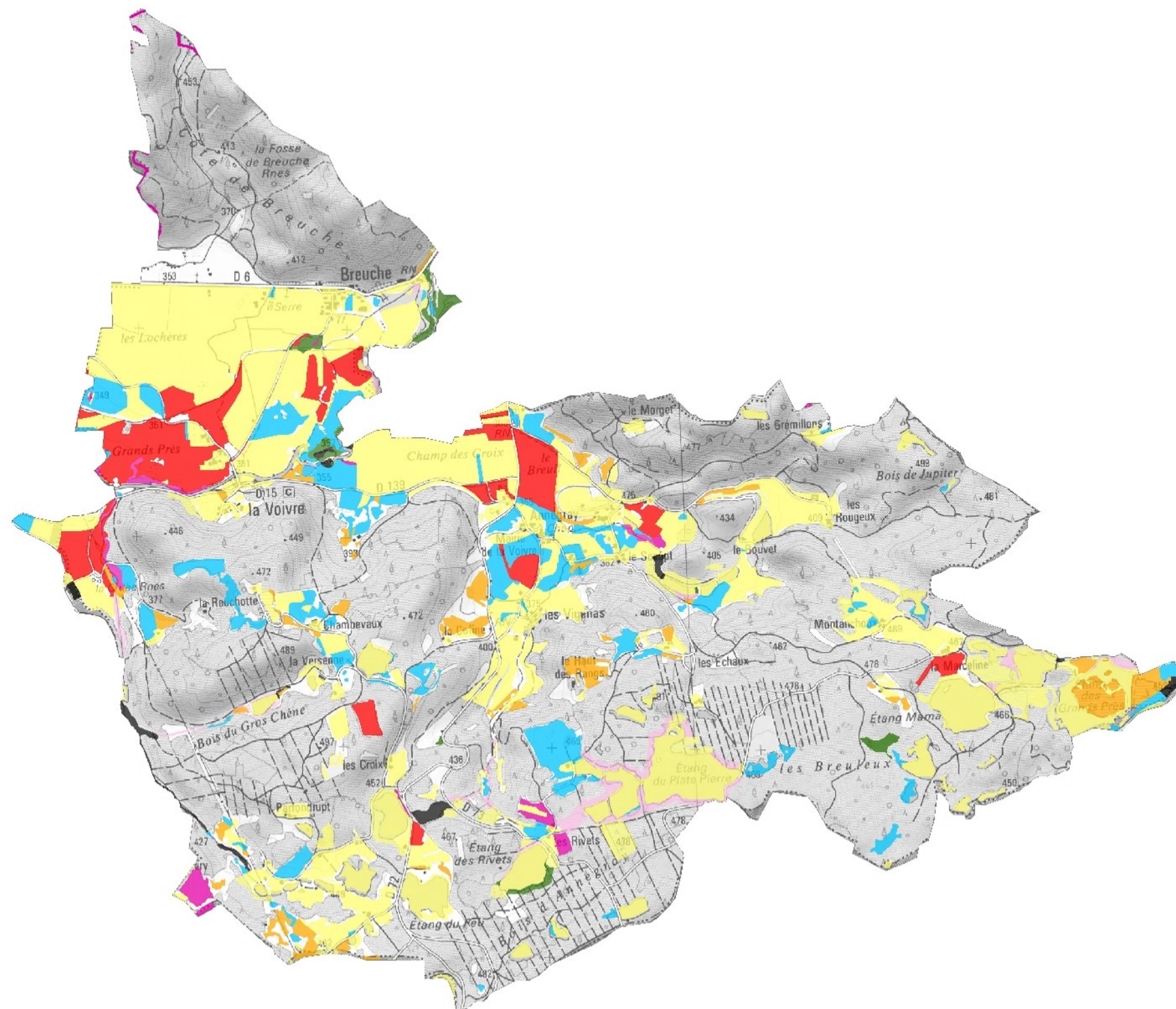
#### des habitats principaux d'intérêt communautaire

-  non concerné (milieux naturels non ciblés par Natura 2000)
-  aucune
-  enrésinement
-  coupe, abattage
-  intensification
-  deprise
-  espèces exotiques
-  autres atteintes
-  inconnue
-  Non étudié



0 0,75 1,5 km

1:23 692





# Site Natura 2000 "Plateau des mille étangs"



## Bilan des actions réalisées dans le cadre de l'animation du site Natura 2000 et du programme LIFE "Continuité écologique"

### Commune de La Voivre

Périmètre du site Natura 2000

Panneau d'informations Natura 2000

### Aménagements dans le cadre du LIFE

moine hydraulique

buse enterée

pont

clôture et abreuvoir

panneau d'informations



### Contrats forestiers Natura 2000

F03i Régénération dirigée

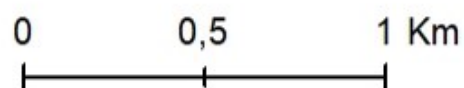
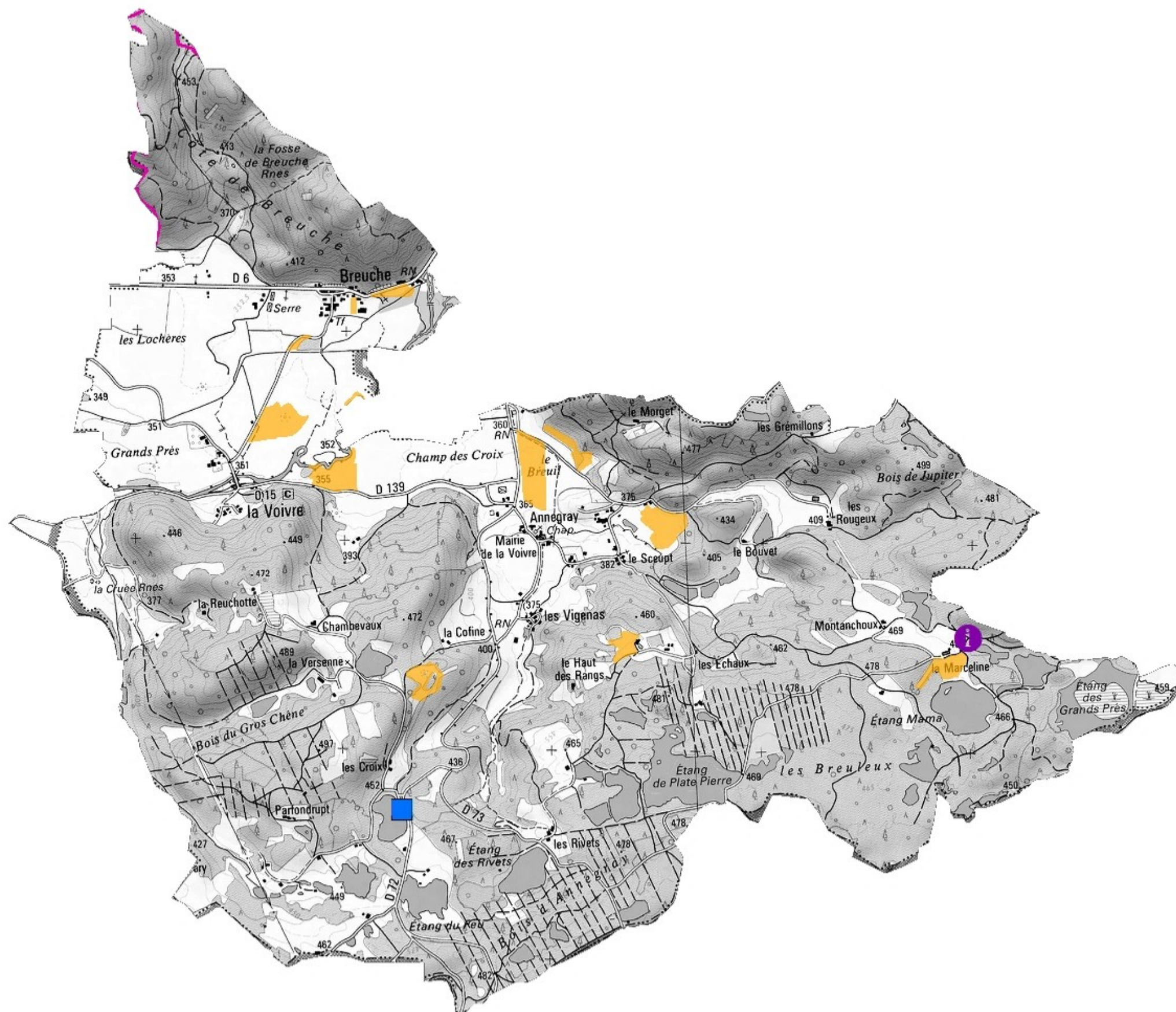
F12i Ilôt de senescence

### Mesures Agri-Environnementales

Parcelles pré-engagées en MAE

### Charte Natura 2000

Parcelles engagées charte Natura 2000



1:29 550

